



PARTS CATALOGUE

AF115C (1UB1) INDONESIA

AF115C (1UB2) INDONESIA

AF115C (1UB3) INDONESIA

AF115C
PARTS CATALOGUE
©2012 by Yamaha Motor Co., Ltd.
1st edition, January 2012
All rights reserved.
Any reprinting or unauthorized use
without the written permission of
Yamaha Motor Co., Ltd.
is expressly prohibited.
Printed in Japan.

FOREWORD

This Parts Catalogue is related to the parts for the model(s) on the cover page. When you are ordering replacement parts, please refer to this Parts Catalogue and quote both part numbers and part names correctly.

1. Modifications or additions which have been made after the issue of the Parts Catalogue will be announced in the Parts News.

It is advisable that you make the necessary corrections to the Parts Catalogue according to the Parts News.

2. Abbreviations

The following abbreviations are used in this Parts Catalogue.

“UR” Use specified parts number.

“UN” Use as many as needed.

“AP” Alternate Parts

“LM” Locally Made (Parts need to be ordered locally)

“F#” Frame No. (Applicable machine No.)

“O/S” Over Size

3. The number of components for assembly

- Parts, which are to be supplied in an assembly, are listed with a dot (.) in front of the part name as shown below.
- The numeral appearing to the right of each component part indicates the quantity of parts for each assembly unit.

PART NO.	DESCRIPTION	Q'TY	REMARKS
2F5-83310-60	FRONT FLASHER LIGHT ASSY	2	
115-83311-60	.BULB (6V-18W)	1	

4. Applicable colours of graphics are represented in the “REMARKS” as shown below.

PART NO.	DESCRIPTION	Q'TY	REMARKS
2N4-24110-00-X5	FUEL TANK COMP.	2	MXR
3J1-24240-10	.GRAPHIC, FUEL TANK	1	FOR MXR

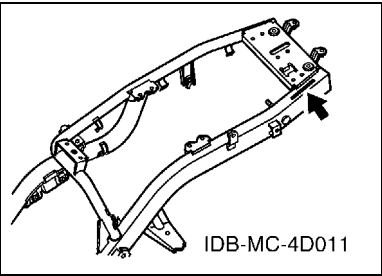
5. Note that the illustrations for reference in finding parts numbers are not to be used for assembling. When assembling, please use the applicable service manual.

6. The asterisk (*) before a reference number indicates modified items after the first edition.

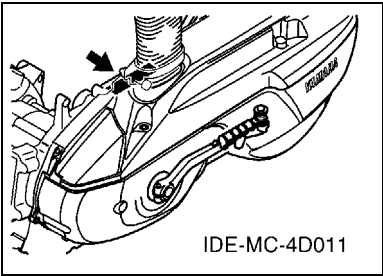
FOREWORD

7. Applicable Serial No.

Frame Serial No.



Engine Serial No.



8. Applicable Colour Code (The (*) mark shows Model colour.)

Abbreviation	Colour Name	Colour Code
BMC(*)	BLUE METALLIC C	0775
DRMK(*)	DEEP RED METALLIC K	0918
LCM4(*)	LIGHT CYAN METALLIC 4	1056
PPRM3(*)	PALE PURPLISH RED METALLIC 3	1091
RM7(*)	RED METALLIC 7	1218
RSM2(*)	REDDISH BLACK METALLIC 2	1159
SL	SILVER	0035
SM1	SILVER METALLIC 1	0660
SMX(*)	BLACK METALLIC X	0903
WM6	WHITE METALLIC 6	1124

9. Applicable Starting Serial No.

Frame Serial No.

Serial No.	Name Of Q'ty Column	Model Code

Engine Serial No.

Serial No.	Name Of Q'ty Column	Model Code

CONTENTS

ENGINE

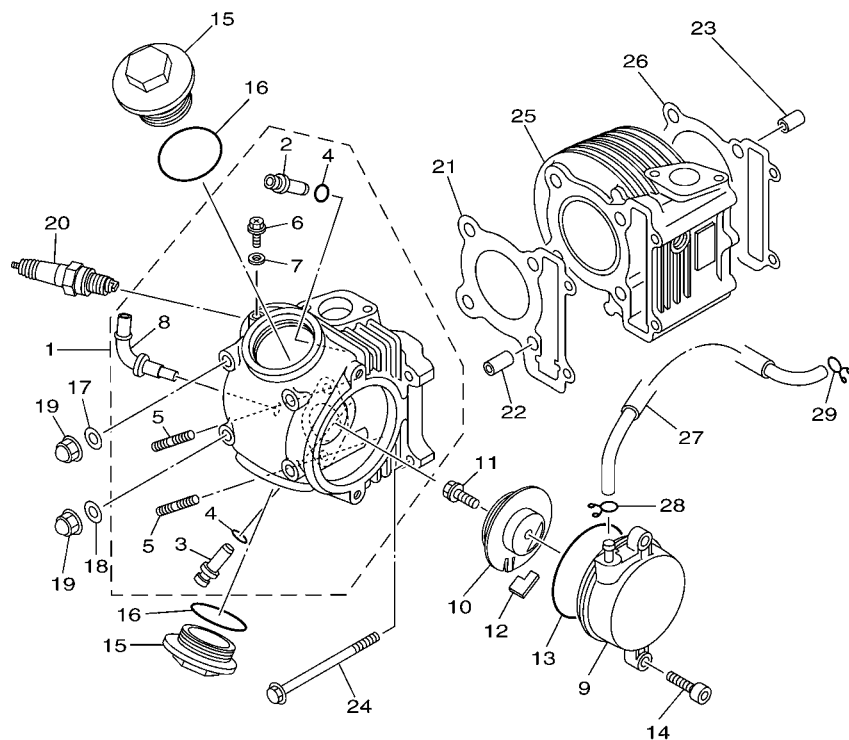
CYLINDER	1
CRANKSHAFT & PISTON	3
VALVE	4
CAMSHAFT & CHAIN	5
OIL PUMP	6
AIR SHROUD & FAN	7
INTAKE	8
CARBURETOR	9
EXHAUST	11
CRANKCASE	13
CRANKCASE COVER 1	15
STARTER	17
CLUTCH	18
TRANSMISSION	20

CHASSIS

FRAME	21
FENDER	22
SIDE COVER	24
REAR ARM & SUSPENSION	26
STEERING	27
FUEL TANK	29
SEAT	30
FRONT WHEEL	31
FRONT BRAKE CALIPER	32
REAR WHEEL	33
STEERING HANDLE & CABLE	34
FRONT MASTER CYLINDER	36
STAND & FOOTREST	37
LEG SHIELD	39
GENERATOR	41
STARTING MOTOR	42
FLASHER LIGHT	43
METER	44
HEADLIGHT	45
TAILLIGHT	46
HANDLE SWITCH & LEVER	47
ELECTRICAL 1	48
ELECTRICAL 2	49

INDEX

NUMERICAL INDEX	50
-----------------------	----




 28D5460-J011

FIG. 1 CYLINDER

REF. NO.	PART NO.	DESCRIPTION	1UB1	1UB2	1UB3		REMARKS
1	14D-E1102-30	CYLINDER HEAD ASSY	1	1	1		
2	5LW-11133-10	.GUIDE, VALVE 1	1	1	1		
3	5LW-11134-10	.GUIDE, VALVE 2	1	1	1		
4	93210-09800	.O-RING	2	2	2		
5	90116-08841	.BOLT, STUD	2	2	2		
6	90153-06803	.SCREW, HEXAGON	1	1	1		
7	90430-06014	.GASKET	1	1	1		
8	28D-E4871-00	.PIPE 1	1	1	1		
9	28D-E1185-00	COVER, CYLINDER HEAD SIDE 3	1	1	1		
10	28D-E1165-00	PLATE, BREATHER	1	1	1		
11	28D-E3185-00	BOLT, BREATHER	1	1	1		
12	28D-E1155-00	SEAL, LABYRINTH	1	1	1		
13	93210-71462	O-RING	1	1	1		
14	91317-06020	BOLT	2	2	2		
15	4ST-E1186-00	COVER, CYLINDER HEAD SIDE 2	2	2	2		
16	93210-448G4	O-RING	2	2	2		
17	90201-08609	WASHER, PLATE	2	2	2		
18	92902-08200	WASHER	2	2	2		
19	90176-08805	NUT, CROWN	4	4	4		
20	94700-00828	PLUG SPARK (NGK C7HSA)	1	1	1		UR
	94700-00886	PLUG, SPARK (DENSO U22FS-U)	1	1	1		UR DENSO
21	5LW-E1181-00	GASKET, CYLINDER HEAD 1	1	1	1		
22	91810-14809	PIN, DOWEL	2	2	2		
23	91810-14809	PIN, DOWEL	2	2	2		
24	95027-06100	BOLT, FLANGE	2	2	2		
25	51S-E1310-20	CYLINDER	1	1	1		
26	5LW-E1351-00	GASKET, CYLINDER	1	1	1		

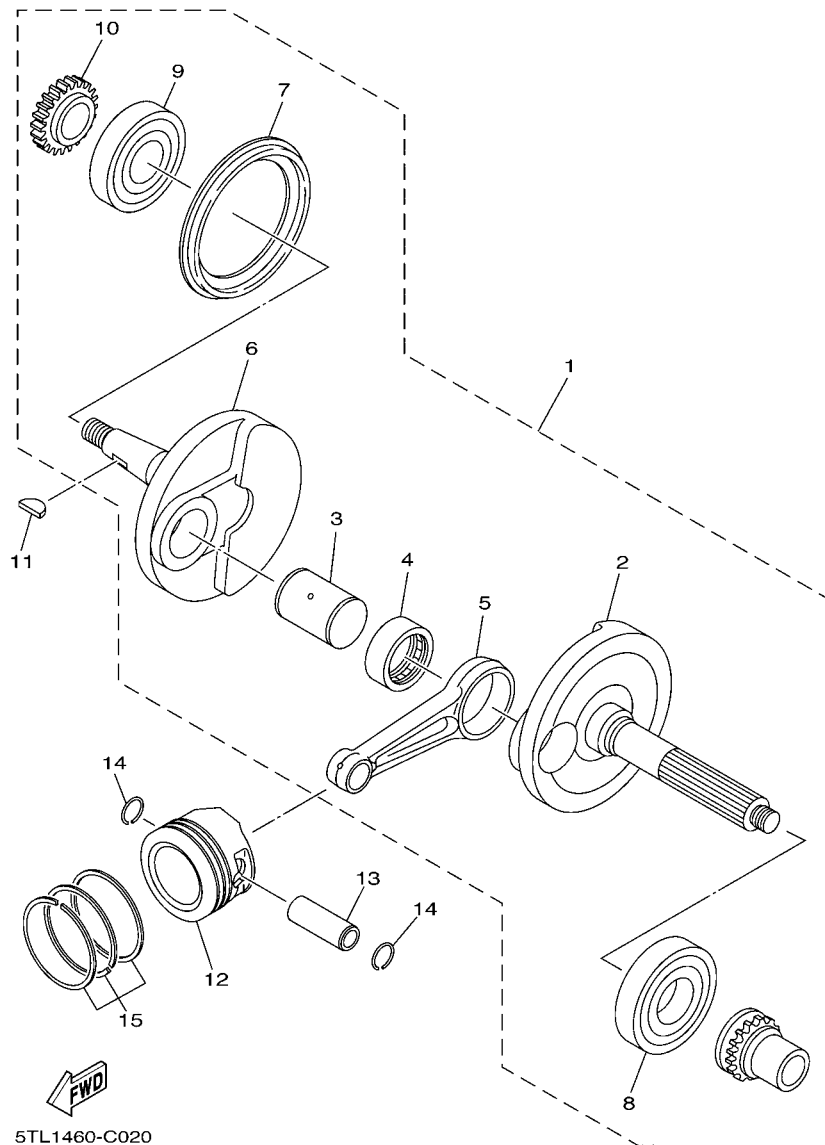


FIG. 2 CRANKSHAFT & PISTON

REF. NO.	PART NO.	DESCRIPTION	TUB1	TUB2	TUB3		REMARKS
1	14D-E1400-00	CRANKSHAFT ASSY	1	1	1		
2	5TL-E1412-10	.CRANK 1	1	1	1		
3	5MX-E1681-10	.PIN, CRANK 1	1	1	1		
4	93310-528Y8	.BEARING	1	1	1		
5	5MX-E1651-10	.ROD, CONNECTING	1	1	1		
6	5TL-E1422-10	.CRANK 2	1	1	1		
7	5LW-E3452-00	.COVER, ROTOR FILTER	1	1	1		
8	93306-305X3	.BEARING	1	1	1		
9	93306-372Y1	.BEARING	1	1	1		
10	5TL-E3324-00	.GEAR, PUMP DRIVE	1	1	1		
11	90280-03017	KEY, WOODRUFF	1	1	1		
12	5MX-E1631-00	PISTON (STD)	1	1	1		
	5MX-E1636-00	PISTON (0.50MM O/S)	1	1	1		AP
	5MX-E1638-00	PISTON (1.00MM O/S)	1	1	1		AP
13	5MX-E1633-10	PIN, PISTON	1	1	1		
14	93450-16068	CIRCLIP	2	2	2		
15	5MX-E1603-10	PISTON RING SET (STD)	1	1	1		
	5MX-E1605-10	PISTON RING SET (0.50MM O/S)	1	1	1		AP
	5MX-E1607-10	PISTON RING SET (1.00MM O/S)	1	1	1		AP



FIG. 3 VALVE

4

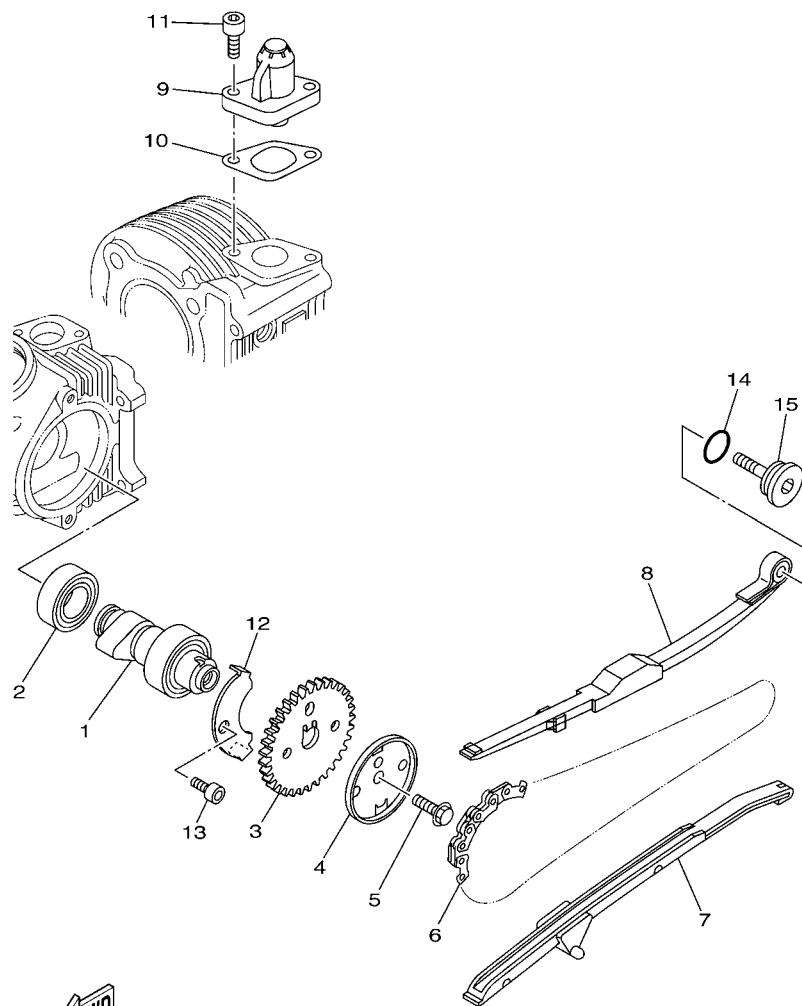


FIG. 4 CAMSHAFT & CHAIN

REF. NO.	PART NO.	DESCRIPTION	1UB1	1UB2	1UB3		REMARKS
1	5TL-E2170-00	CAMSHAFT ASSY 1	1	1	1		UR
	5LW-E2170-10	CAMSHAFT ASSY 1	1	1	1		UR
2	93306-002X2	BEARING	1	1	1		
3	5MX-E2176-00	SPROCKET, CAM CHAIN	1	1	1		
4	5MX-E1145-00	PLATE, BREATHER 2	1	1	1		
5	95817-08016	BOLT, FLANGE	1	1	1		
6	94568-B3090	CHAIN	1	1	1		
7	5VV-E2231-00	GUIDE, STOPPER 1	1	1	1		
8	5MX-E2241-00	GUIDE, STOPPER 2	1	1	1		
9	5MX-E2210-10	TENSIONER ASSY, CAM CHAIN	1	1	1		
10	5MX-E2213-01	GASKET, TENSIONER CASE	1	1	1		
11	91317-06016	BOLT	2	2	2		
12	5LW-E111F-00	PLATE	1	1	1		
13	91317-06012	BOLT	1	1	1		
14	93210-15862	O-RING	1	1	1		
15	4CW-E2157-00	BOLT	1	1	1		

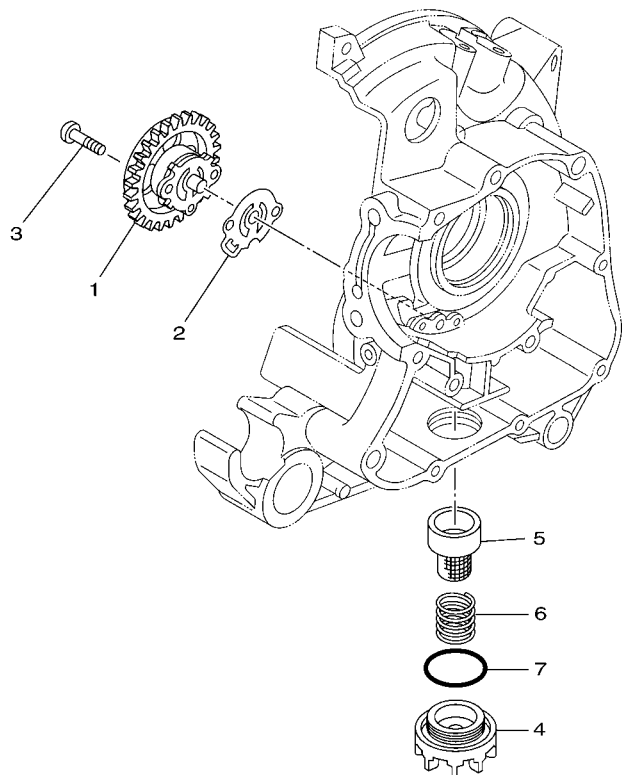


FIG. 5 OIL PUMP

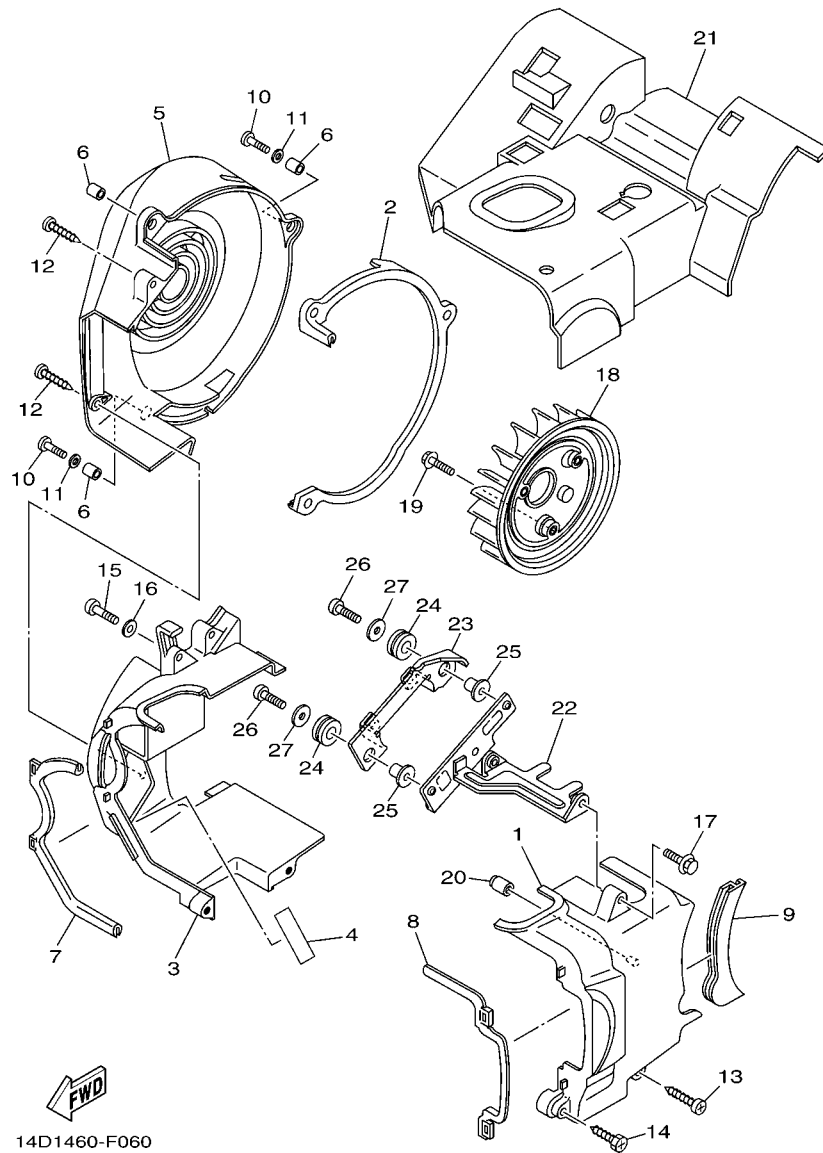


FIG. 6 AIR SHROUD & FAN

REF. NO.	PART NO.	DESCRIPTION	1UB1	1UB2	1UB3		REMARKS
1	5LW-E2651-00	AIR SHROUD, CYLINDER 1	1	1	1		
2	5LW-E2658-00	DAMPER, AIR SHROUD 1	1	1	1		
3	5LW-E2652-00	AIR SHROUD, CYLINDER 2	1	1	1		
4	5TL-E2682-00	PROTECTOR, HEAT	1	1	1		
5	14D-E2653-10	AIR SHROUD, CYLINDER 3	1	1	1		
6	90387-067V1	COLLAR	3	3	3		
7	5LW-E2659-02	DAMPER, AIR SHROUD 2	1	1	1		
8	5LW-E2668-02	DAMPER, AIR SHROUD 3	1	1	1		
9	5TL-E2669-00	DAMPER, AIR SHROUD 4	1	1	1		
10	98507-06020	SCREW, PAN HEAD	2	2	2		
11	92907-06600	WASHER, PLATE	2	2	2		
12	97707-60530	SCREW, TAPPING	2	2	2		
13	97707-60530	SCREW, TAPPING	1	1	1		
14	97707-60430	SCREW, TAPPING	1	1	1		
15	98507-06025	SCREW, PAN HEAD	1	1	1		
16	92907-06600	WASHER, PLATE	1	1	1		
17	90105-06804	BOLT, FLANGE	1	1	1		
18	5LW-E2611-00	FAN	1	1	1		
19	95027-06012	BOLT, FLANGE	3	3	3		
20	5LW-E3569-00	PLUG, BLIND	1	1	1		
21	5TL-E2631-10	DEFLECTOR 1	1	1	1		
22	5TL-E2681-10	PLATE	1	1	1		
23	5TL-E2633-00	PLATE	1	1	1		
24	90480-14817	GROMMET	2	2	2		
25	90387-06052	COLLAR	2	2	2		
26	98507-06020	SCREW, PAN HEAD	2	2	2		
27	90201-06088	WASHER, PLATE	2	2	2		

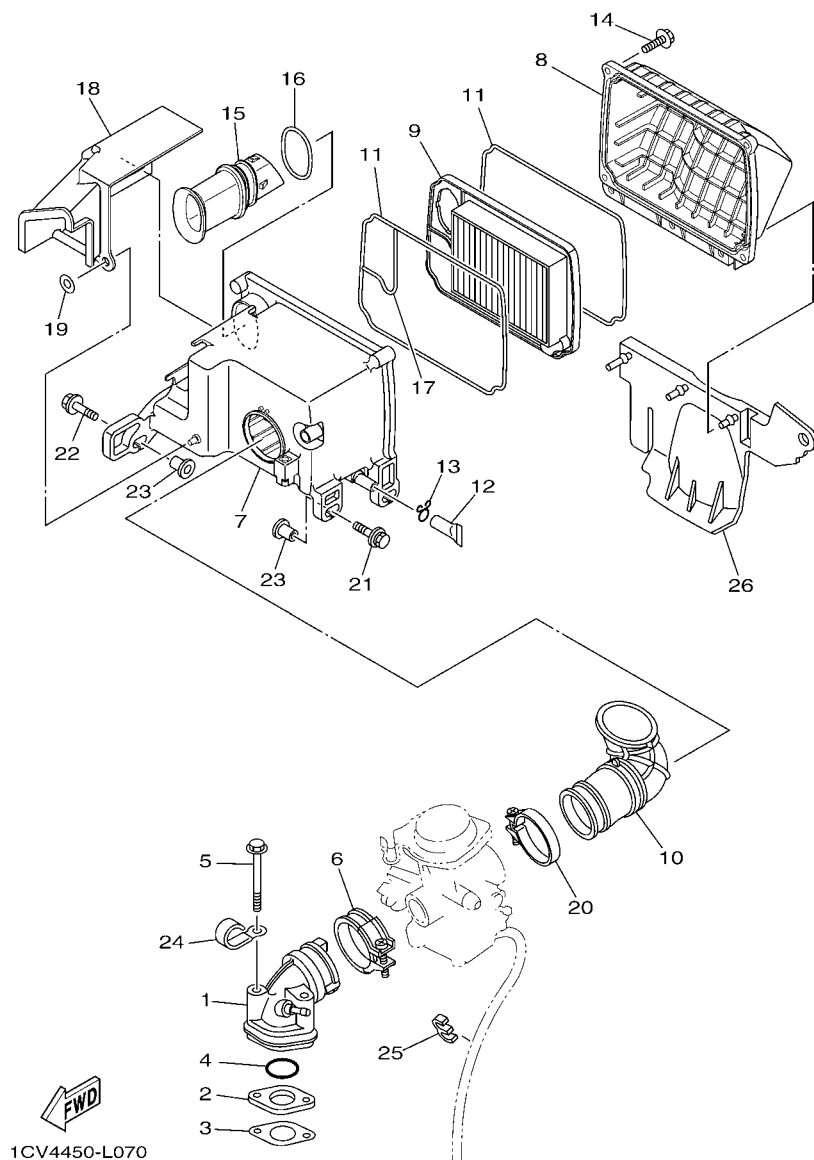


FIG. 7 INTAKE

REF. NO.	PART NO.	DESCRIPTION	1UB1	1UB2	1UB3		REMARKS
1	28D-E3585-00	MANIFOLD	1	1	1		
2	5MX-E3595-10	JOINT	1	1	1		
3	5MX-E3556-01	GASKET, MANIFOLD	1	1	1		
4	93210-25803	O-RING	1	1	1		
5	95817-06065	BOLT, FLANGE	2	2	2		
6	5MX-E3474-01	BAND	1	1	1		
7	14D-E4411-00	CASE, AIR CLEANER 1	1	1	1		
8	14D-E4412-00	CAP, CLEANER CASE 1	1	1	1		
9	14D-WE445-10	AIR CLEANER ELEMENT ASSY	1	1	1		
10	5TL-E4453-00	JOINT, AIR CLEANER 1	1	1	1		
11	5TL-E4452-00	SEAL	2	2	2		
12	28D-E443E-00	PIPE, DRAIN	1	1	1		
13	90467-12807	CLIP	1	1	1		
14	90163-05803	SCREW, TAPPING	5	5	5		
15	14D-E4437-00	DUCT	1	1	1		
16	14D-E4467-00	SEAL	1	1	1		
17	5TL-E4462-00	SEAL	1	1	1		
18	14D-E4417-00	COVER 1	1	1	1		
19	92907-05200	WASHER	1	1	1		
20	5MX-E3575-01	BAND	1	1	1		
21	90119-06182	BOLT, WITH WASHER	2	2	2		
22	90119-06211	BOLT, WITH WASHER	1	1	1		
23	90387-06891	COLLAR	3	3	3		
24	90462-08806	CLAMP	1	1	1		
25	90464-60810	CLAMP	1	1	1		
26	14D-F1691-00	FLAP	1	1	1		

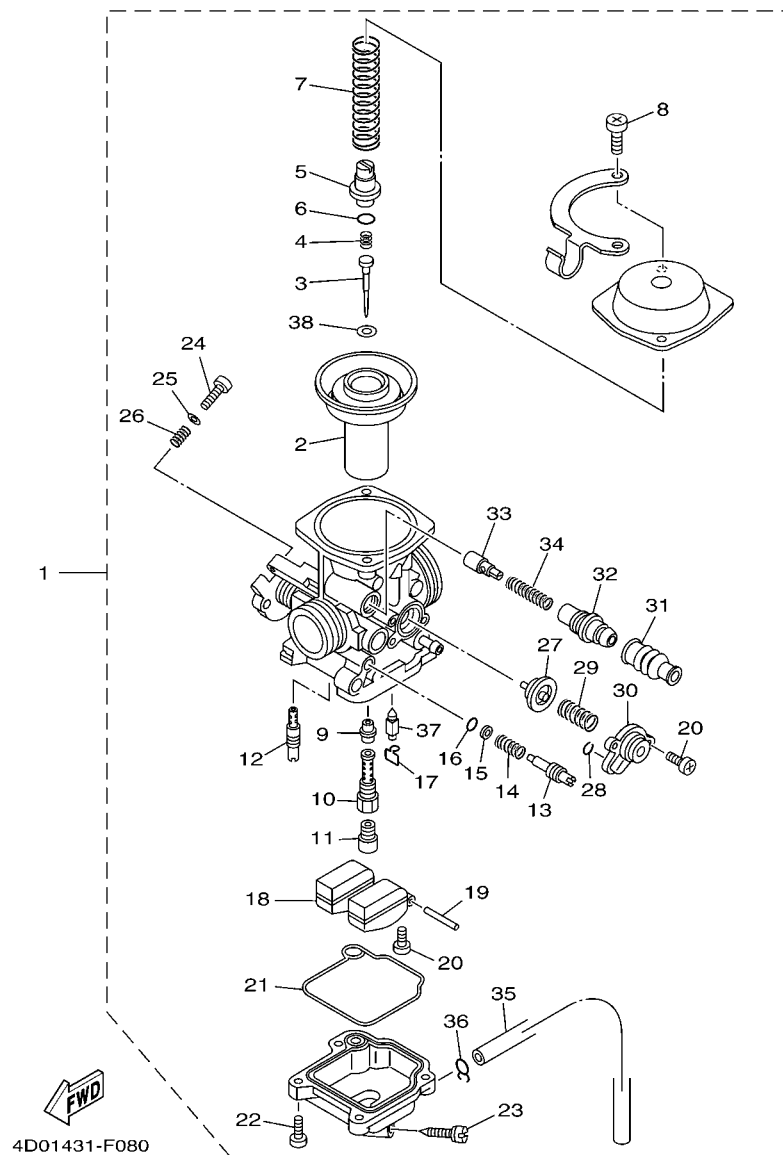


FIG. 8 CARBURETOR

REF. NO.	PART NO.	DESCRIPTION	1UB1	1UB2	1UB3	REMARKS
1	14D-E4901-10	CARBURETOR ASSY 1	1	1	1	
2	5TL-E4940-00	.DIAPHRAGM ASSY	1	1	1	
3	14D-E4916-00	.JET NEEDLE COMP.	1	1	1	
4	4D0-E4133-00	.SPRING, THROTTLE STOP	1	1	1	
5	4D0-E4936-00	.SEAT, SPRING	1	1	1	
6	3TJ-14564-40	.O-RING	1	1	1	
7	5TL-E4933-00	.SPRING, DIAPHRAGM	1	1	1	
8	28D-E4D25-00	.SCREW, PAN HEAD	2	2	2	
9	5TL-E4947-00	.JET, NEEDLE	1	1	1	
10	14D-E414G-00	.PIPE, MAIN BLEED	1	1	1	
11	4D0-E4943-00	.JET, MAIN (# 108)	1	1	1	
12	5TL-E4948-02	.JET (#38)	1	1	1	
13	4D0-E4923-00	.SCREW, PILOT	1	1	1	
14	4JH-14160-00	.COIL, SPRING	1	1	1	
15	3TJ-14952-40	.WASHER	1	1	1	
16	3TJ-14562-40	.O-RING	1	1	1	
17	663-14159-00	.CLIP	1	1	1	
18	5TL-E4985-00	.FLOAT	1	1	1	
19	676-14548-00	.PIN, FLOAT ARM	1	1	1	
20	688-14592-00	.SCREW	3	3	3	
21	5TL-E4984-00	.GASKET, FLOAT CHAMBER	1	1	1	
22	98502-04012	.SCREW, PAN HEAD	4	4	4	
23	28D-E4191-00	.PLUG, DRAIN	1	1	1	
24	5TL-E4922-00	.SCREW, THROTTLE	1	1	1	
25	4TV-14557-00	.WASHER	1	1	1	
26	5TL-E4531-00	.SPRING, ADJUST SCREW	1	1	1	
27	14D-E4170-00	.DIAPHRAGM ASSY	1	1	1	

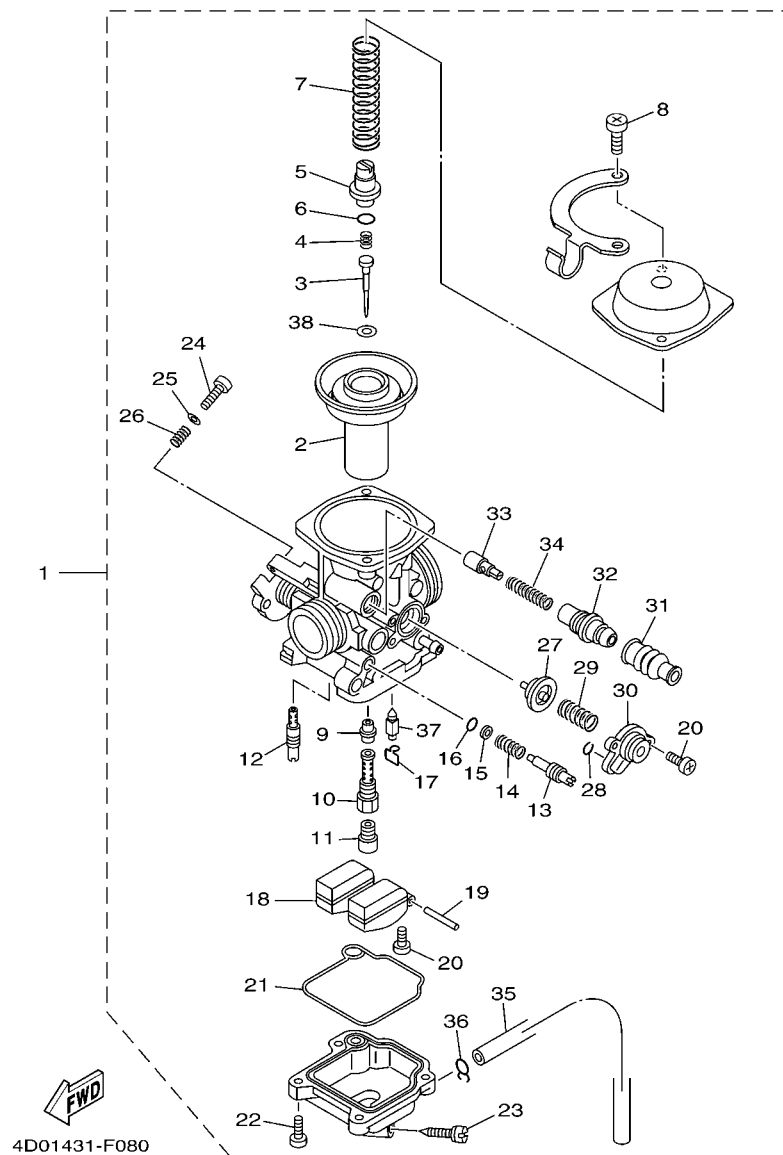


FIG. 8 CARBURETOR

[illegible]

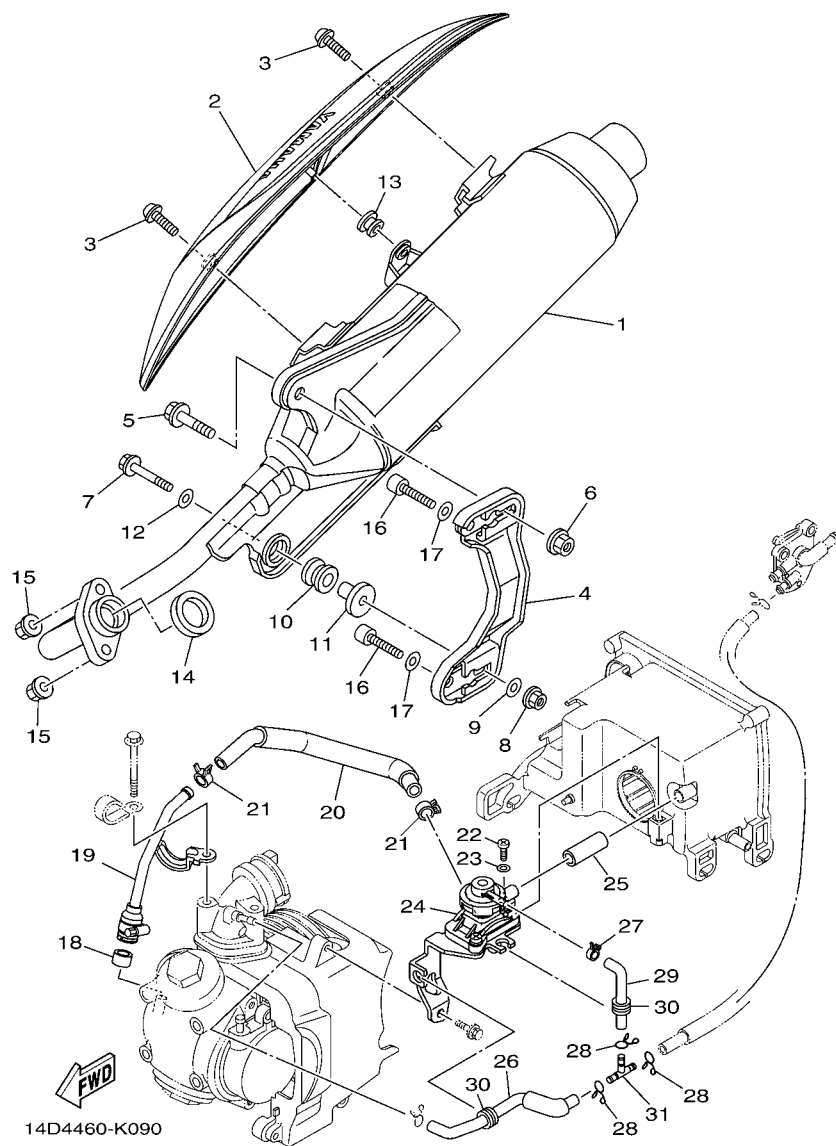


FIG. 9 EXHAUST

REF. NO.	PART NO.	DESCRIPTION	1UB1	1UB2	1UB3		REMARKS
1	1UB-E4610-00	EXHAUST PIPE ASSY 1	1	1	1		
2	28D-E4718-00	PROTECTOR, MUFFLER 1	1	1	1		
3	90111-06807	BOLT, HEX. SOCKET BUTTON	2	2	2		
4	28D-E4770-00	STAY, MUFFLER 1	1	1	1		
5	95817-10035	BOLT, FLANGE	1	1	1		
6	95707-10500	NUT, FLANGE	1	1	1		
7	95817-08045	BOLT, FLANGE	1	1	1		
8	90185-08017	NUT, SELF-LOCKING	1	1	1		
9	90201-081R9	WASHER, PLATE	1	1	1		
10	5TL-E4747-00	DAMPER, MUFFLER	1	1	1		
11	5TL-E479M-20	COLLAR 1	1	1	1		
12	90201-08043	WASHER, PLATE	1	1	1		
13	90480-10332	GROMMET	1	1	1		
14	14D-E4613-00	GASKET, EXHAUST PIPE	1	1	1		
15	95707-08500	NUT, FLANGE	2	2	2		
16	91317-08035	BOLT	2	2	2		
17	90201-08043	WASHER, PLATE	2	2	2		
18	28D-E4714-00	GASKET, MUFFLER	1	1	1		
19	5TL-E4872-00	PIPE 2	1	1	1		
20	14D-E4881-10	HOSE, BEND 1	1	1	1		
21	90467-13806	CLIP	2	2	2		
22	98507-06014	SCREW, PAN HEAD	1	1	1		
23	92907-06600	WASHER, PLATE	1	1	1		
24	14D-E4803-01	AIR INDUCTION SYSTEM ASSY	1	1	1		
25	5TL-E3545-00	HOSE 1	1	1	1		
26	14D-E3542-00	HOSE, VACUUM SENSING 1	1	1	1		
27	90467-08804	CLIP	1	1	1		

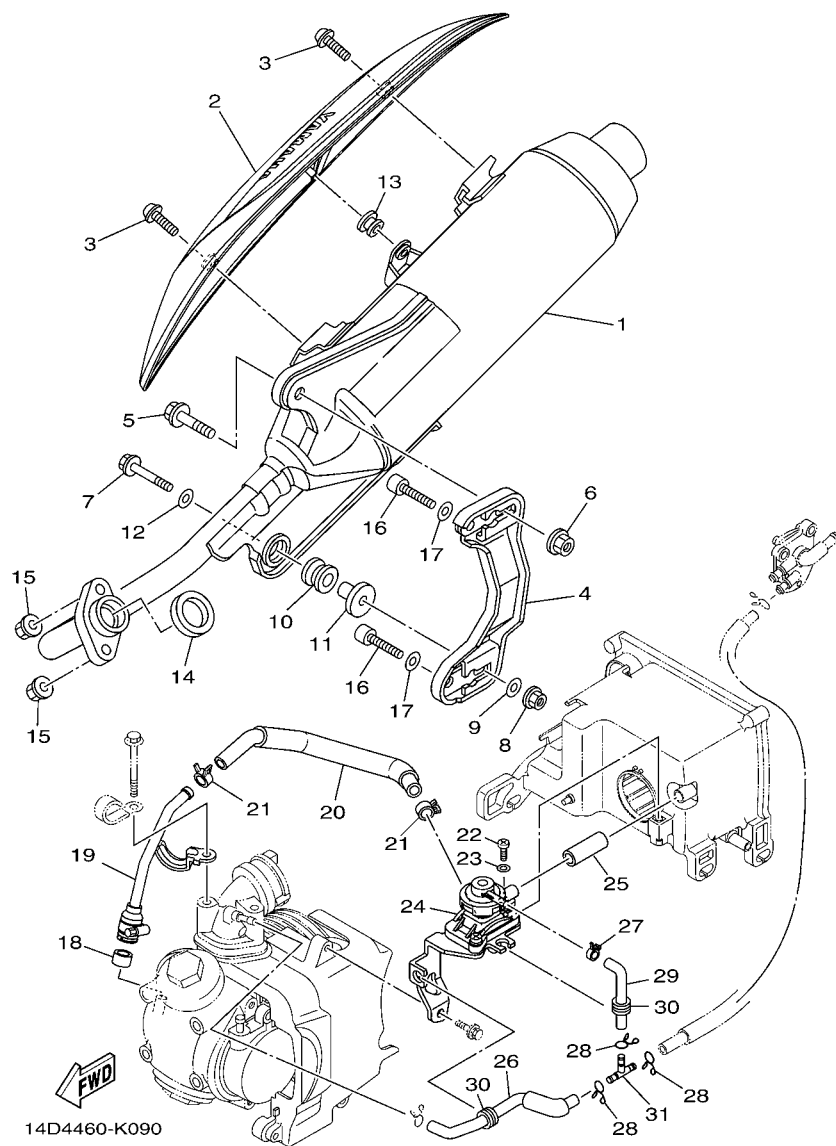


FIG. 9 EXHAUST

[illegible]

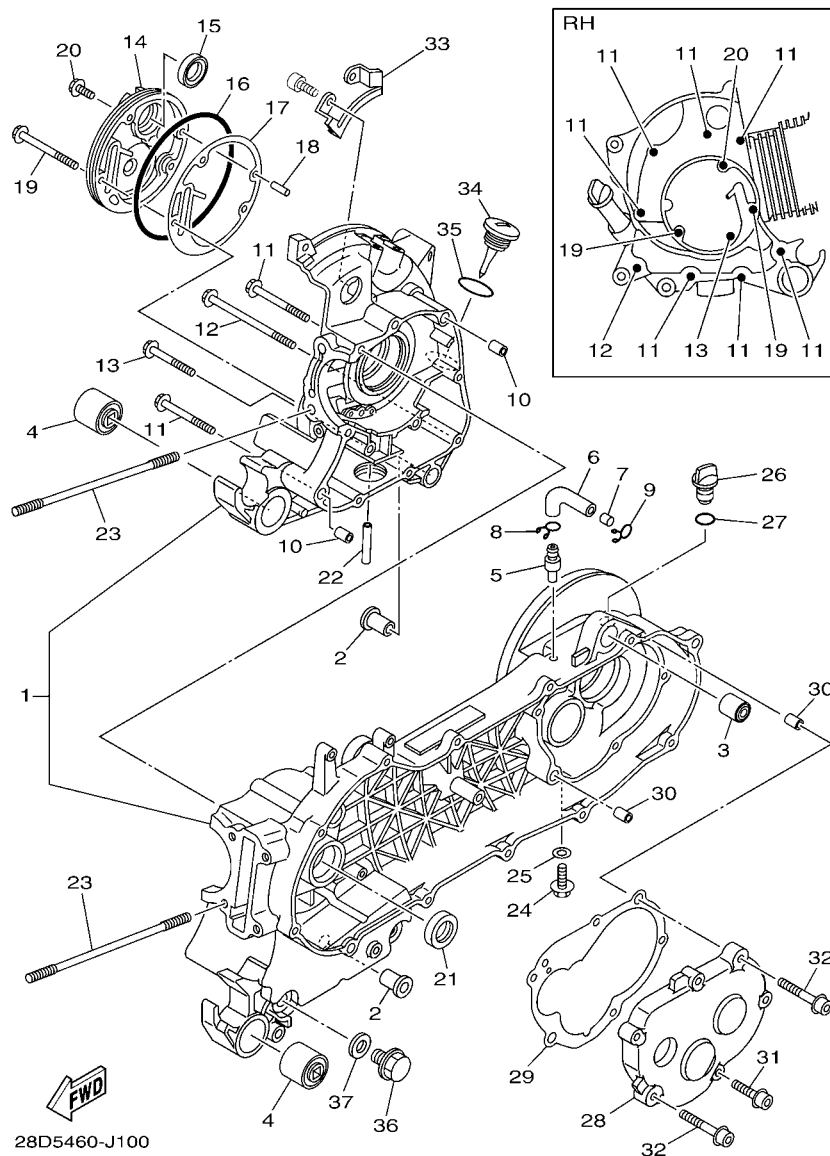


FIG. 10 CRANKCASE

REF. NO.	PART NO.	DESCRIPTION	TUB1	TUB2	TUB3	REMARKS
1	5VV-E5150-11	CRANKCASE ASSY	1	1	1	UR
	5WP-E5150-12	CRANKCASE ASSY	1	1	1	UR
	51S-E5150-30	CRANKCASE ASSY	1	1	1	UR
2	5MX-F7121-00	BUSH	2	2	2	
3	5MX-F2216-00	BUSH, REAR SHOCK ABSORBER	1	1	1	
4	5TL-F2123-00	BUSH 1	2	2	2	
5	5TL-E5371-00	BREATHER	1	1	1	
6	5TL-E5373-00	PIPE, BREATHER	1	1	1	
7	14D-E5408-00	ELEMENT 2	1	1	1	
8	90467-11106	CLIP	1	1	1	
9	90467-11106	CLIP	1	1	1	
10	91810-14809	PIN, DOWEL	2	2	2	
11	95027-06060	BOLT, FLANGE	7	7	7	
12	95027-06100	BOLT, FLANGE	1	1	1	
13	95027-06050	BOLT, FLANGE	1	1	1	
14	5LW-E5417-00	COVER, CAP	1	1	1	
15	93102-19800	OIL SEAL	1	1	1	
16	93211-07800	O-RING	1	1	1	
17	5LW-E5453-00	GASKET	1	1	1	
18	99480-05010	PIN	1	1	1	
19	95027-06070	BOLT, FLANGE	2	2	2	
20	95027-06016	BOLT, FLANGE	1	1	1	
21	93102-22810	OIL SEAL	1	1	1	
22	5LW-E3416-00	PIPE, OIL 1	1	1	1	
23	5MX-E1391-00	BOLT, STUD 1	4	4	4	
24	95817-08016	BOLT, FLANGE	1	1	1	
25	90430-08119	GASKET	1	1	1	

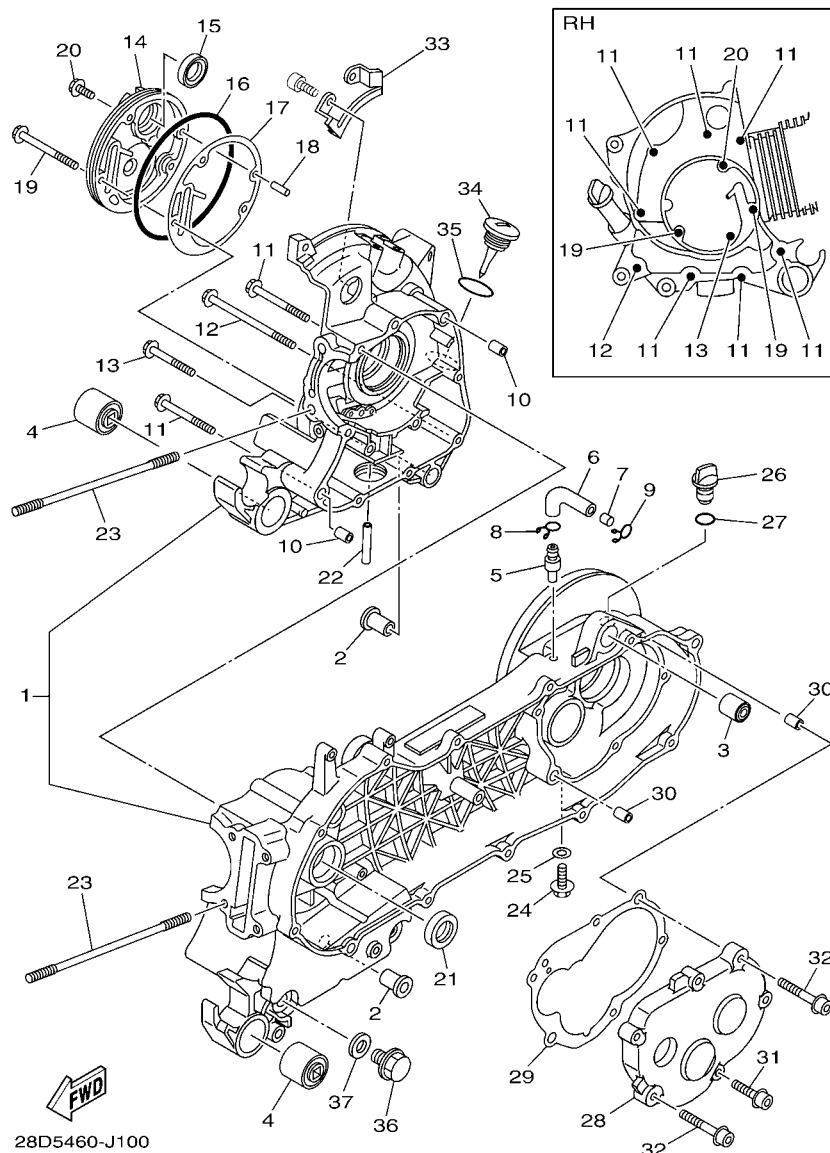


FIG. 10 CRANKCASE

[illegible]

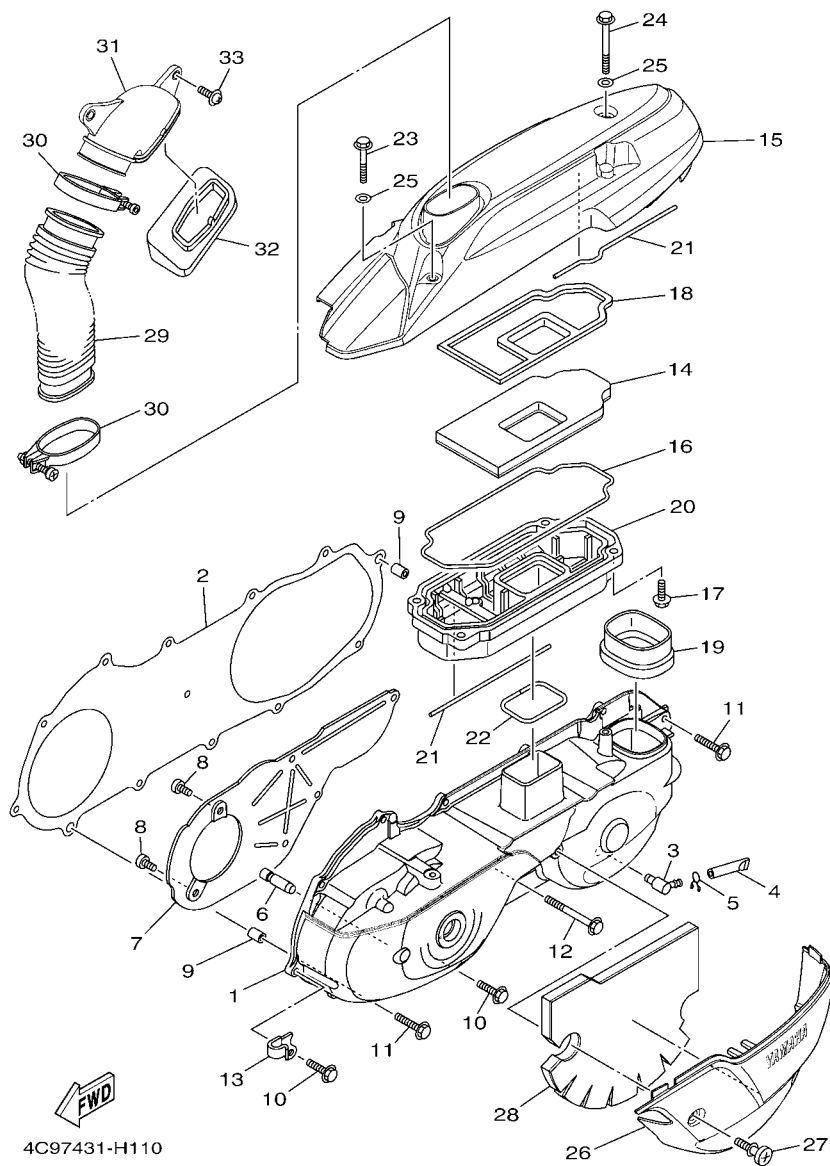
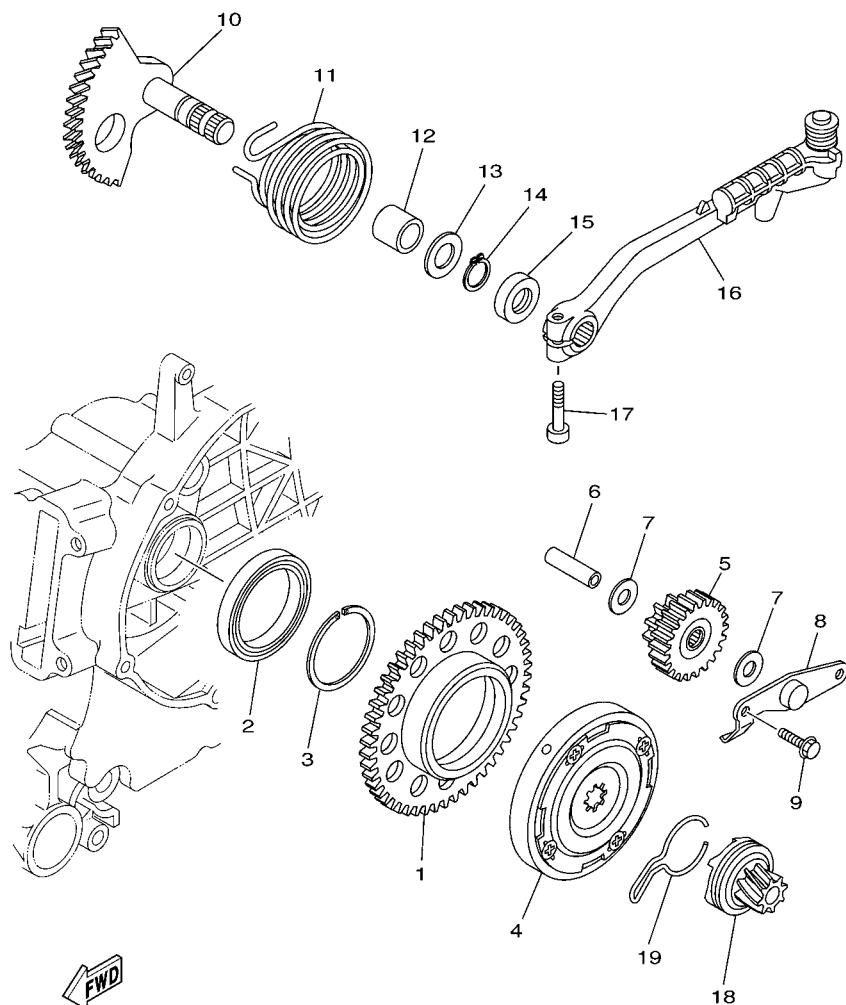


FIG. 11 CRANKCASE COVER 1

REF. NO.	PART NO.	DESCRIPTION	1UB1	1UB2	1UB3		REMARKS
1	14D-E5411-10	COVER, CRANKCASE 1	1	1	1		
2	5LW-E5451-00	GASKET, CRANKCASE COVER 1	1	1	1		
3	5LW-E5371-01	BREATHER	1	1	1		
4	4ST-E443E-00	PIPE, DRAIN	1	1	1		
5	90467-11106	CLIP	1	1	1		
6	5LW-15659-01	SHAFT	1	1	1		
7	14D-E5191-00	PLATE	1	1	1		
8	98907-06010	SCREW, BIND	6	6	6		
9	91810-14809	PIN, DOWEL	2	2	2		
10	95027-06025	BOLT, FLANGE	10	10	10		
11	95027-06035	BOLT, FLANGE	2	2	2		
12	95027-06060	BOLT, FLANGE	1	1	1		
13	90462-10802	CLAMP	1	1	1		
14	14D-E5407-01	ELEMENT 1	1	1	1		
15	14D-E5333-00	COVER	1	1	1		
16	14D-E5472-00	SEAL, AIR DUCT	1	1	1		
17	90119-05804	BOLT, WITH WASHER	4	4	4		
18	14D-E5497-00	PLATE, DUST SEAL	1	1	1		
19	5TL-E5475-00	DUCT, AIR	1	1	1		
20	14D-E5492-00	COVER	1	1	1		
21	14D-E5315-00	SEAL, CRANKCASE	2	2	2		
22	5TL-E5494-00	SEAL, PROTECTOR	1	1	1		
23	95027-06040	BOLT, FLANGE	1	1	1		
24	95027-06060	BOLT, FLANGE	1	1	1		
25	92907-06200	WASHER	2	2	2		
26	14D-E5413-00	COVER	1	1	1		
27	14D-E5481-00	BOLT 1	2	2	2		




 5VV2431-D120

FIG. 12 STARTER

REF. NO.	PART NO.	DESCRIPTION	1UB1	1UB2	1UB3		REMARKS
1	28D-E5524-00	WHEEL, STARTER	1	1	1		
2	93306-809Y0	BEARING	1	1	1		
3	93440-45827	CIRCLIP	1	1	1		
4	5VV-E5570-10	STARTER CLUTCH ASSY	1	1	1		
5	51S-E5650-00	IDLE GEAR ASSY	1	1	1		
6	5MX-E5521-00	SHAFT 1	1	1	1		
7	90201-10018	WASHER, PLATE	2	2	2		
8	5LW-E5532-00	PLATE, IDLE GEAR	1	1	1		
9	95027-06012	BOLT, FLANGE	2	2	2		
10	28D-E5601-00	KICK SHAFT ASSY	1	1	1		
11	90508-32768	SPRING, TORSION	1	1	1		
12	90380-15809	BUSH, SOLID	1	1	1		
13	90201-154E8	WASHER, PLATE (T=1.0)	1	1	1		
14	99009-15400	CIRCLIP	1	1	1		
15	93102-15801	OIL SEAL	1	1	1		
16	5MX-E5620-01	KICK CRANK ASSY	1	1	1		
17	91317-06025	BOLT	1	1	1		
18	4VP-E5630-00	KICK PINION ASSY	1	1	1		
19	5MX-E5673-00	CLIP	1	1	1		

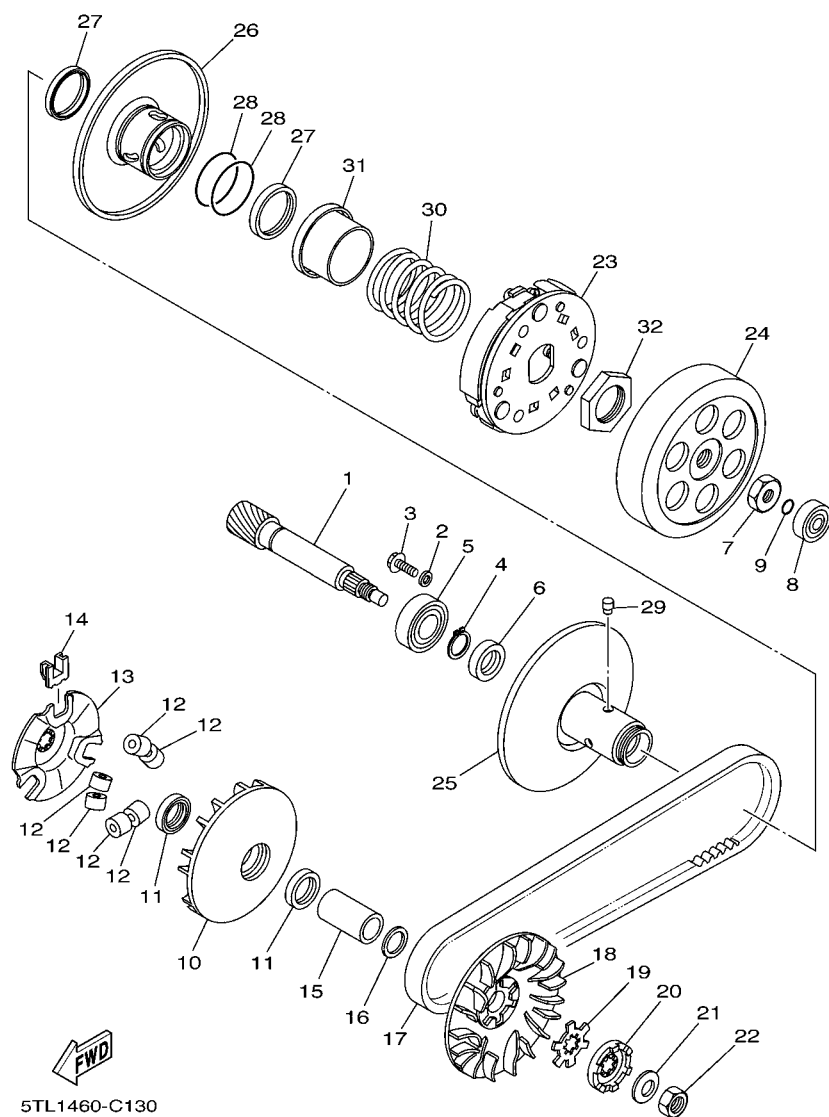


FIG. 13 CLUTCH

REF. NO.	PART NO.	DESCRIPTION	1UB1	1UB2	1UB3		REMARKS
1	2D5-E6111-00	GEAR, PRIMARY DRIVE	1	1	1		UR
	28D-E6111-00	GEAR, PRIMARY DRIVE	1	1	1		UR
2	90201-06060	WASHER, PLATE	1	1	1		
3	95027-06010	BOLT, FLANGE	1	1	1		
4	99009-17400	CIRCLIP	1	1	1		
5	93306-203YY	BEARING	1	1	1		
6	93102-17812	OIL SEAL	1	1	1		
7	90170-10317	NUT	1	1	1		
8	93300-638Y8	BEARING	1	1	1		
9	93210-06800	O-RING	1	1	1		
10	5LW-E7620-00	PRIMARY SLIDING SHEAVE COMP.	1	1	1		
11	93101-21803	OIL SEAL	2	2	2		
12	4VP-17632-00	WEIGHT	6	6	6		
13	5TL-E7623-00	CAM	1	1	1		
14	5LW-17653-00	SLIDER	3	3	3		
15	90387-16811	COLLAR	1	1	1		UR
	90387-16009	COLLAR	1	1	1		UR
16	90201-16008	WASHER, PLATE	1	1	1		
17	5TL-E7641-01	V-BELT	1	1	1		
18	5TL-E7611-00	SHEAVE, PRIMARY FIXED	1	1	1		
19	90214-14002	WASHER, CLAW	1	1	1		
20	5MX-E5657-00	CLUTCH, ONEWAY	1	1	1		
21	90208-12050	WASHER, CONICAL SPRING	1	1	1		
22	95307-12700	NUT	1	1	1		
23	14D-E6620-00	CLUTCH CARRIER ASSY	1	1	1		
24	5TL-E6611-03	CLUTCH HOUSING COMP.	1	1	1		
25	5TL-E7660-00	SECONDARY FIXED SHEAVE COMP.	1	1	1		

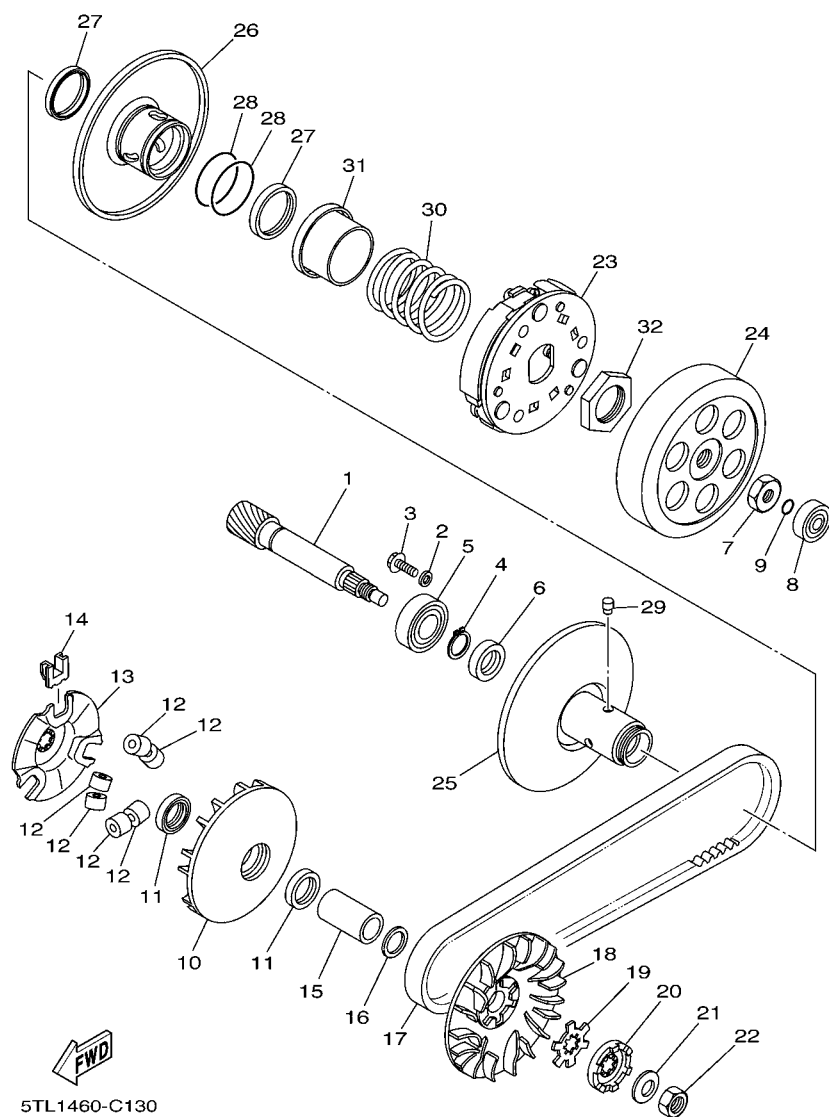


FIG. 13 CLUTCH

[illegible]

[illegible]

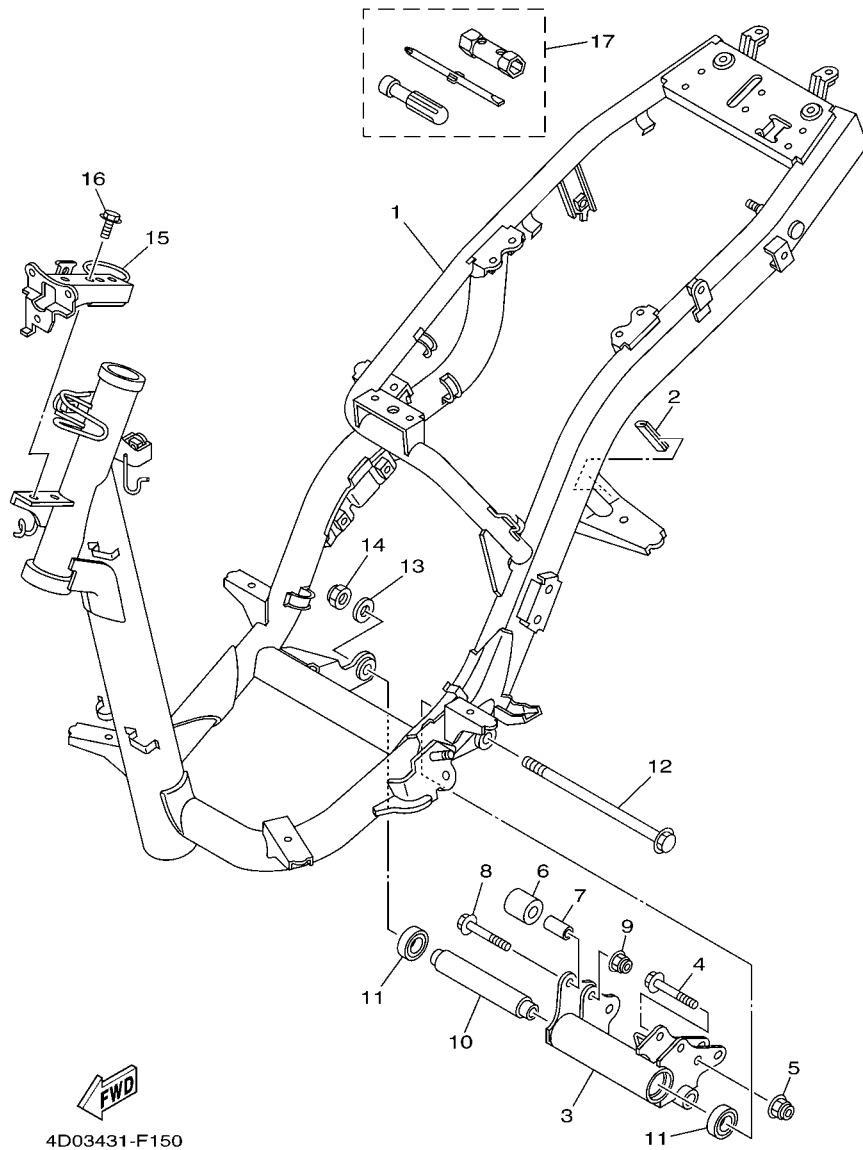


FIG. 15 FRAME

REF. NO.	PART NO.	DESCRIPTION	1UB1	1UB2	1UB3		REMARKS
1	1UB-F1110-00	FRAME COMP.	1	1	1		
2	14D-F1278-00	MOLD	1	1	1		
3	28D-F1410-00	ENGINE BRACKET COMP.	1	1	1		
4	90105-10066	BOLT, FLANGE	2	2	2		
5	9560L-10200	NUT, SELF-LOCKING	2	2	2		
6	5MX-F7114-00	STOPPER, MAIN STAND	2	2	2		
7	90387-08754	COLLAR	2	2	2		
8	90105-08048	BOLT, FLANGE	2	2	2		
9	95602-08200	NUT, SELF-LOCKING	2	2	2		
10	5TL-F1459-00	SPACER	1	1	1		
11	93306-003YR	BEARING	2	2	2		
12	5TL-F5181-01	AXLE, WHEEL	1	1	1		
13	90201-12688	WASHER, PLATE	1	1	1		
14	90185-12008	NUT, SELF-LOCKING	1	1	1		
15	1UB-F8356-00	STAY 1	1	1	1		
16	95802-06010	BOLT, FLANGE	2	2	2		
17	5TL-F8100-00	TOOL KIT	1	1	1		

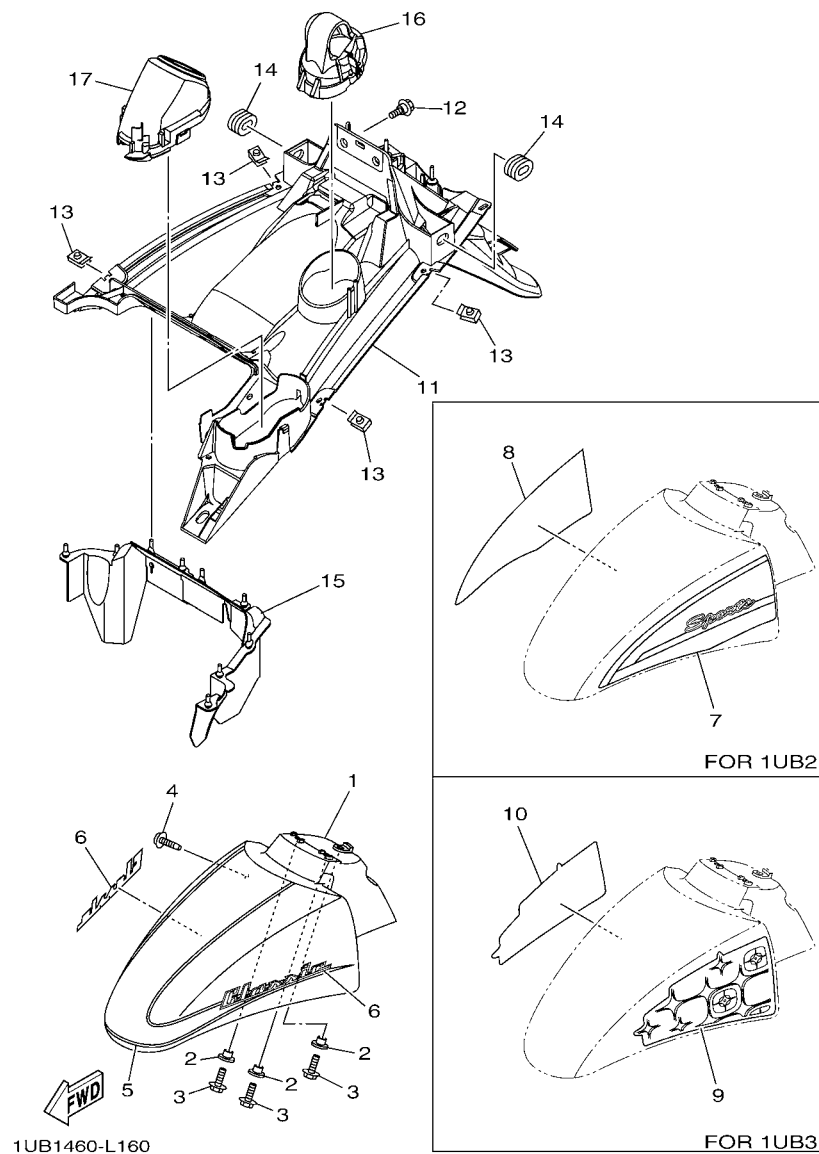


FIG. 16 FENDER

REF. NO.	PART NO.	DESCRIPTION	1UB1	1UB2	1UB3	REMARKS
1	1UB-F1511-00-P0	FENDER, FRONT	1			FOR RSM2
	1UB-F1511-00-P1	FENDER, FRONT	1			FOR DRMK
	1UB-F1511-00-P2	FENDER, FRONT		1		WM6 FOR RM7,BMC
	1UB-F1511-00-P3	FENDER, FRONT		1		FOR SMX
	1UB-F1511-00-P5	FENDER, FRONT			1	FOR PPRM3
	1UB-F1511-00-P4	FENDER, FRONT			1	FOR LCM4
2	90387-068S1	COLLAR	3	3	3	
3	95802-06014	BOLT, FLANGE	3	3	3	
4	90159-06817	SCREW, WITH WASHER	1	1	1	
5	1UB-F1570-00	GRAPHIC SET, FRONT FENDER	1			UR FOR RSM2
	1UB-F1570-10	GRAPHIC SET, FRONT FENDER	1			UR FOR DRMK
6	1UB-F1565-00	EMBLEM 2	2			UR FOR RSM2
	1UB-F1565-10	EMBLEM 2	2			UR FOR DRMK
7	1UB-F1569-00	GRAPHIC 1		1		UR FOR RM7
	1UB-F1569-10	GRAPHIC 1		1		UR FOR SMX
	1UB-F1569-20	GRAPHIC 1		1		UR FOR BMC
8	1UB-F1579-00	GRAPHIC 2		1		UR FOR RM7
	1UB-F1579-10	GRAPHIC 2		1		UR FOR SMX
	1UB-F1579-20	GRAPHIC 2		1		UR FOR BMC
9	1UB-F1599-00	GRAPHIC 3			1	UR FOR PPRM3
	1UB-F1599-10	GRAPHIC 3			1	UR FOR LCM4
10	1UB-F15A9-00	GRAPHIC 4			1	UR FOR PPRM3
	1UB-F15A9-10	GRAPHIC 4			1	UR FOR LCM4
11	1UB-F1611-00	FENDER, REAR	1	1	1	
12	90109-063F1	BOLT	2	2	2	
13	90183-05807	NUT, SPRING	4	4	4	
14	90480-01805	GROMMET	2	2	2	

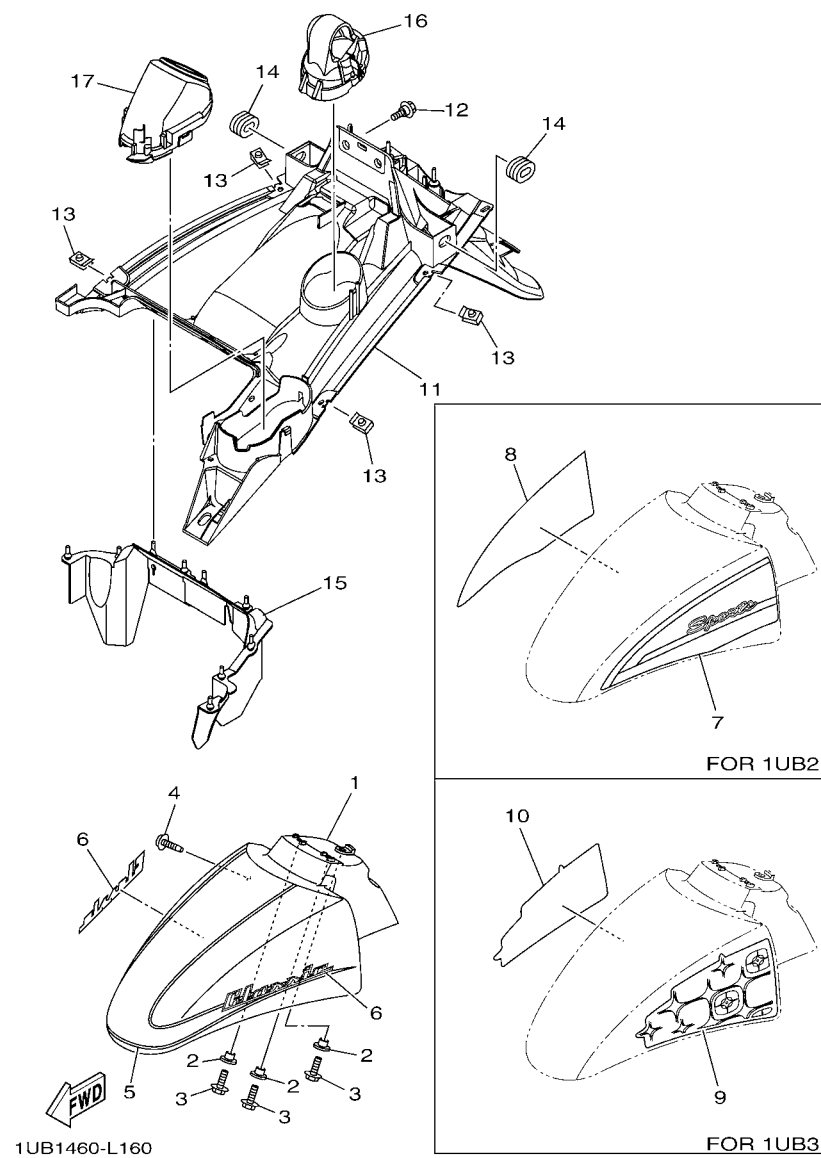


FIG. 16 FENDER

[illegible]

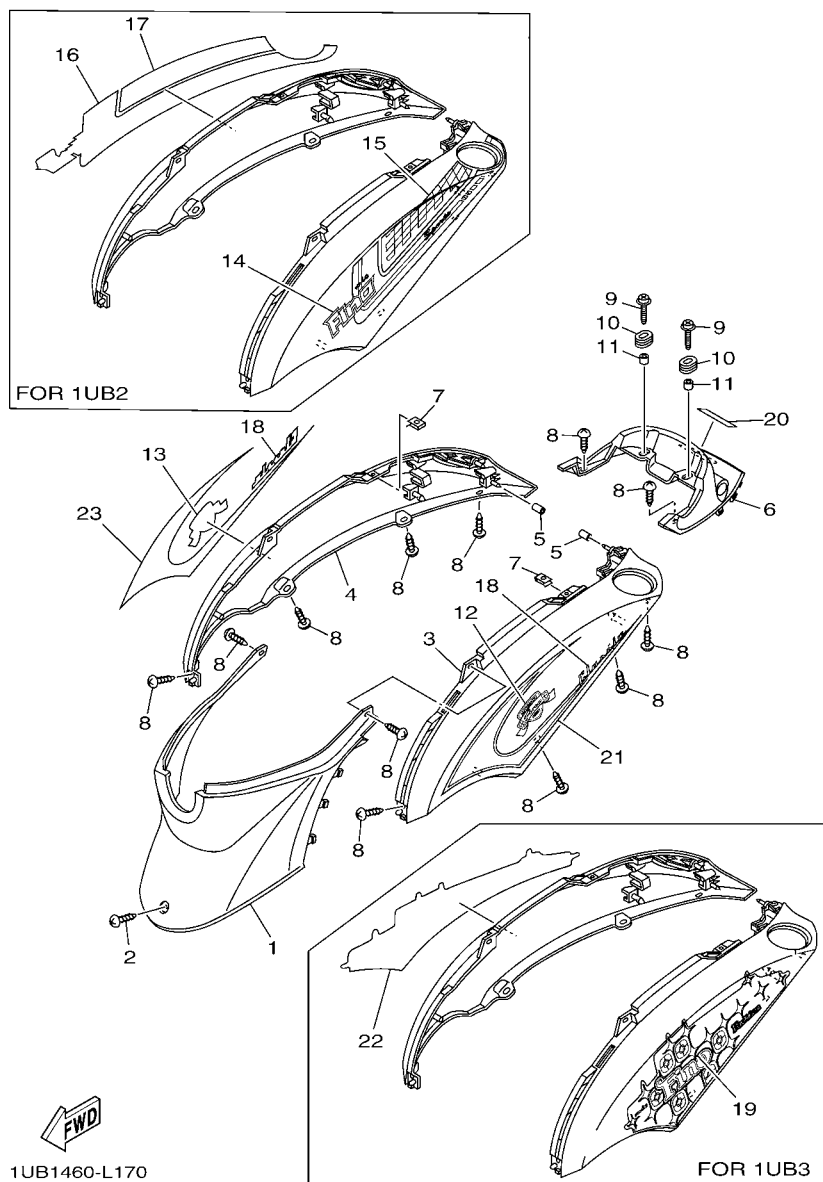


FIG. 17 SIDE COVER

REF. NO.	PART NO.	DESCRIPTION	1UB1	1UB2	1UB3	REMARKS
1	1UB-F172W-00-P0	COVER	1		1	WM6
	1UB-F172W-00-P1	COVER		1		RM7 FOR RM7,SMX
	1UB-F172W-00-P2	COVER		1		FOR BMC
2	97707-50016	SCREW, TRUSS HEAD TAPPING	1	1	1	
3	1UB-F1711-00-P0	COVER, SIDE 1	1			FOR RSM2
	1UB-F1711-00-P1	COVER, SIDE 1	1			FOR DRMK
	1UB-F1711-00-P2	COVER, SIDE 1		1		WM6 FOR RM7,BMC
	1UB-F1711-00-P3	COVER, SIDE 1		1		FOR SMX
	1UB-F1711-00-P5	COVER, SIDE 1			1	FOR PPRM3
	1UB-F1711-00-P4	COVER, SIDE 1			1	FOR LCM4
4	1UB-F1721-00-P0	COVER, SIDE 2	1			FOR RSM2
	1UB-F1721-00-P1	COVER, SIDE 2	1			FOR DRMK
	1UB-F1721-00-P2	COVER, SIDE 2		1		WM6 FOR RM7,BMC
	1UB-F1721-00-P3	COVER, SIDE 2		1		FOR SMX
	1UB-F1721-00-P5	COVER, SIDE 2			1	FOR PPRM3
	1UB-F1721-00-P4	COVER, SIDE 2			1	FOR LCM4
5	90445-08834	HOSE	2	2	2	
6	1UB-F1731-00-P0	COVER, SIDE 3	1		1	WM6
	1UB-F1731-00-P1	COVER, SIDE 3		1		RM7 FOR RM7,SMX
	1UB-F1731-00-P2	COVER, SIDE 3		1		FOR BMC
7	90183-05807	NUT, SPRING	2	2	2	
8	97707-50016	SCREW, TRUSS HEAD TAPPING	12	12	12	
9	90159-06067	SCREW, WITH WASHER	2	2	2	
10	90480-01805	GROMMET	2	2	2	
11	90387-06851	COLLAR	2	2	2	
12	1UB-F173D-00	EMBLEM 3D	1			
13	1UB-F174D-00	EMBLEM 3D	1			

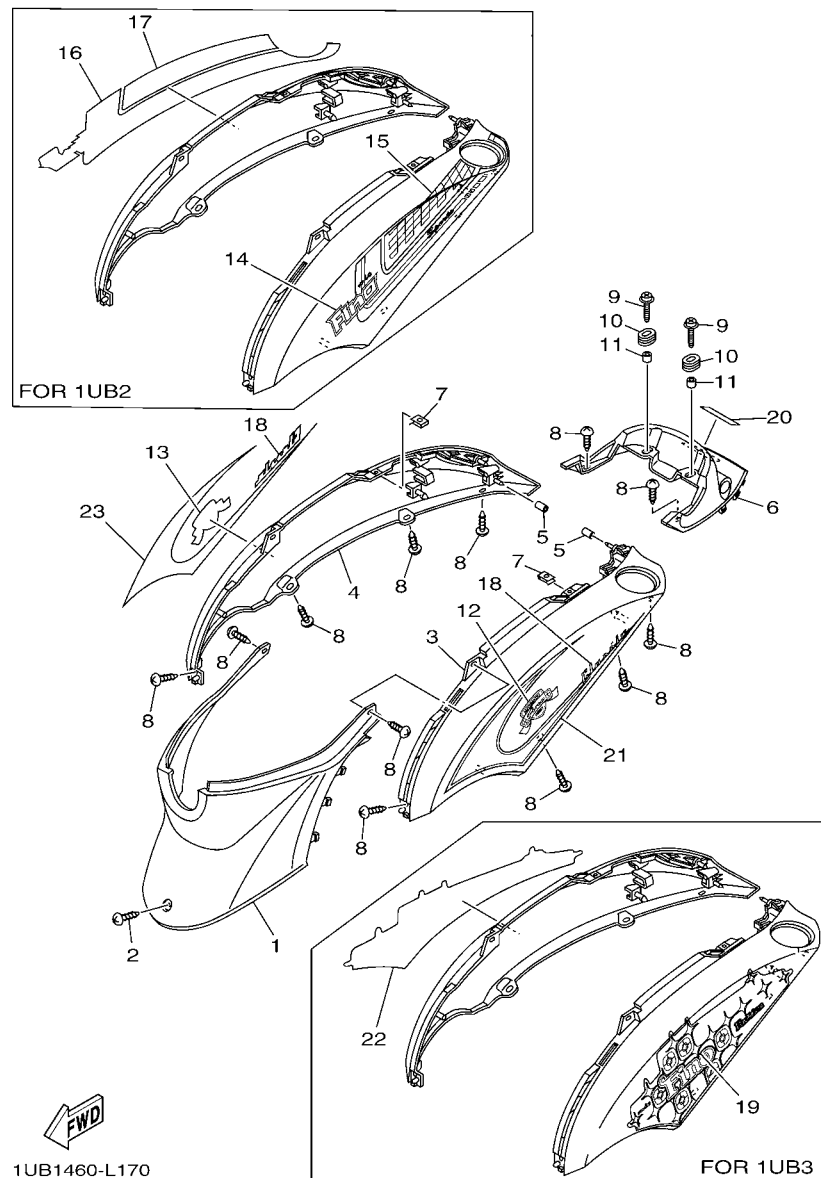


FIG. 17 SIDE COVER

REF. NO.	PART NO.	DESCRIPTION	1UB1	1UB2	1UB3	REMARKS
14	1UB-F179L-00	GRAPHIC 9		1		UR FOR RM7
	1UB-F179L-10	GRAPHIC 9		1		UR FOR SMX
	1UB-F179L-20	GRAPHIC 9		1		UR FOR BMC
15	1UB-F17A1-00	GRAPHIC 13		1		UR FOR RM7,BMC
	1UB-F17A1-10	GRAPHIC 13		1		UR FOR SMX
16	1UB-F179M-00	GRAPHIC 10		1		UR FOR RM7
	1UB-F179M-10	GRAPHIC 10		1		UR FOR SMX
	1UB-F179M-20	GRAPHIC 10		1		UR FOR BMC
17	1UB-F17A2-00	GRAPHIC 14		1		UR FOR RM7,BMC
	1UB-F17A2-10	GRAPHIC 14		1		UR FOR SMX
18	1UB-F1781-00	EMBLEM 1	2			UR FOR RSM2
	1UB-F1781-10	EMBLEM 1	2			UR FOR DRMK
19	1UB-F179P-00	GRAPHIC 11			1	UR FOR PPRM3
	1UB-F179P-10	GRAPHIC 11			1	UR FOR LCM4
20	3S0-F153E-10	EMBLEM, YAMAHA	1			
	3S0-F153E-30	EMBLEM, YAMAHA		1		UR FOR RM7,BMC
	3S0-F153E-10	EMBLEM, YAMAHA		1		UR FOR SMX
	3S0-F153E-00	EMBLEM, YAMAHA			1	
21	1UB-F179J-00	GRAPHIC 7	1			UR FOR RSM2
	1UB-F179J-10	GRAPHIC 7	1			UR FOR DRMK
22	1UB-F179S-00	GRAPHIC 12			1	UR FOR PPRM3
	1UB-F179S-10	GRAPHIC 12			1	UR FOR LCM4
23	1UB-F179K-00	GRAPHIC 8	1			UR FOR RSM2
	1UB-F179K-10	GRAPHIC 8	1			UR FOR DRMK

[illegible]

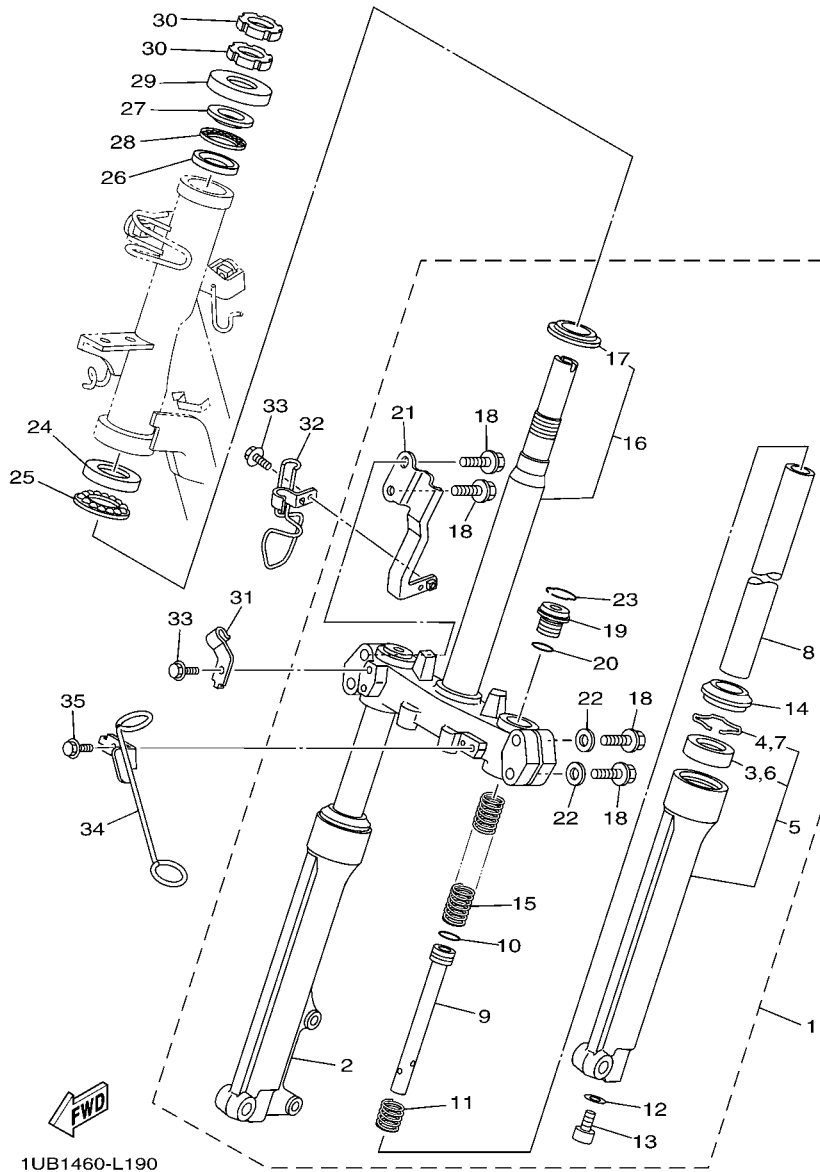


FIG. 19 STEERING

REF. NO.	PART NO.	DESCRIPTION	1UB1	1UB2	1UB3		REMARKS
1	1UB-F3100-00	FRONT FORK ASSY	1	1	1		
2	54P-F3136-00	.TUBE, OUTER (RIGHT)	1	1	1		
3	3AY-F3145-00	..OIL SEAL	1	1	1		
4	5P0-F3156-00	..RING, SNAP	1	1	1		
5	54P-F3126-00	.TUBE, OUTER (LEFT)	1	1	1		
6	3AY-F3145-00	..OIL SEAL	1	1	1		
7	5P0-F3156-00	..RING, SNAP	1	1	1		
8	28D-F3110-00	.INNER TUBE COMP.1	2	2	2		
9	28D-F3170-00	.CYLINDER COMP., FRONT FORK	2	2	2		
10	2JG-F3157-00	.RING, PISTON	2	2	2		
11	5D9-F3152-00	.SPRING, SUB	2	2	2		
12	509-F3158-L0	.GASKET	2	2	2		
13	278-F3181-50	.BOLT, HEXAGON SOCKET HEAD	2	2	2		
14	5LM-F3144-00	.SEAL, DUST	2	2	2		
15	28D-F3141-00	.SPRING, FRONT FORK	2	2	2		
16	28D-F3340-00	..UNDER BRACKET COMP.	1	1	1		
17	18G-23411-00	..RACE, BALL 1	1	1	1		
18	4D0-F3346-00	.BOLT 1	4	4	4		
19	28D-F3111-00	.BOLT, CAP	2	2	2		
20	2JG-F3147-00	.O-RING	2	2	2		
21	1UB-F334G-00	.BRACKET 1	1	1	1		
22	4D0-F3165-00	.WASHER, FELT	2	2	2		
23	5P0-F3153-00	.RING, SNAP	2	2	2		
24	156-23412-00	RACE, BALL 2	1	1	1		
25	5TL-2341E-00	RETAINER, BALL BEARING (16)	1	1	1		
26	22F-23412-01	RACE, BALL 2	1	1	1		
27	22F-23411-01	RACE, BALL 1	1	1	1		

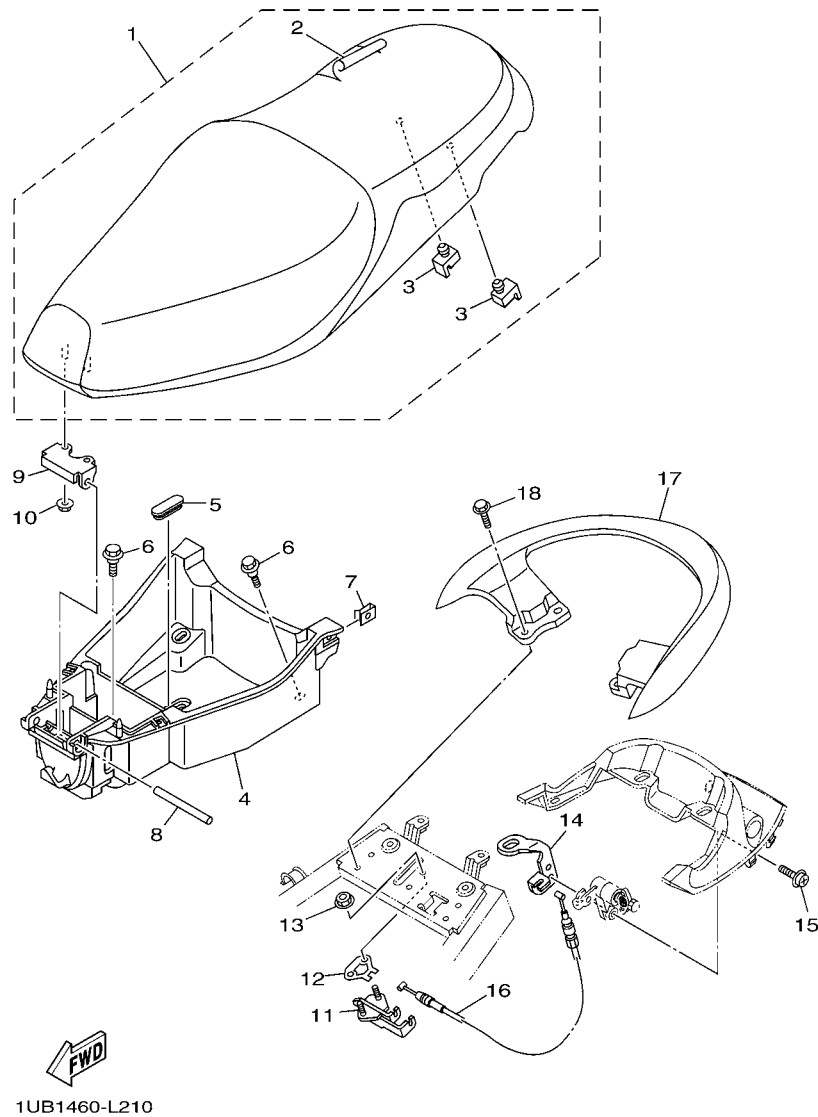


FIG. 21 SEAT

REF. NO.	PART NO.	DESCRIPTION	1UB1	1UB2	1UB3		REMARKS
1	1UB-F4730-00	DOUBLE SEAT ASSY	1				
	1UB-F4730-10	DOUBLE SEAT ASSY		1			
	1UB-F4730-20	DOUBLE SEAT ASSY			1		
2	1UB-F470F-00	.SEAT COVER COMP.	1				
	1UB-F470F-10	.SEAT COVER COMP.		1			
	1UB-F470F-20	.SEAT COVER COMP.			1		
3	14D-F4741-00	.PAD, SEAT	2	2	2		
4	14D-F473R-00	BOX 1	1	1	1		
5	5TL-F6199-00	PLUG, BLIND	1	1	1		
6	90109-06202	BOLT	4	4	4		
7	90183-05807	NUT, SPRING	2	2	2		
8	5TL-F4727-00	PIN, SEAT FITTING	1	1	1		
9	5TL-F4726-00	HINGE, SEAT	1	1	1		
10	95702-06500	NUT, FLANGE	2	2	2		
11	5TL-F4780-00	SEAT LOCK ASSY	1	1	1		
12	5TL-F4792-00	PLATE	1	1	1		
13	95702-06500	NUT, FLANGE	2	2	2		
14	1UB-F117K-00	STAY, LOCK	1	1	1		
15	90159-06054	SCREW, WITH WASHER	1	1	1		
16	1UB-F478E-00	CABLE, SEAT LOCK	1	1	1		
17	1UB-F4773-00-P0	HANDLE, SEAT	1				UR FOR RSM2
	1UB-F4773-00-P1	HANDLE, SEAT	1				UR FOR DRMK
	1UB-F4773-00-P2	HANDLE, SEAT		1			SMX
	1UB-F4773-00-P4	HANDLE, SEAT			1		UR FOR PPRM3
	1UB-F4773-00-P3	HANDLE, SEAT			1		UR FOR LCM4
18	95812-06020	BOLT, FLANGE	4	4	4		

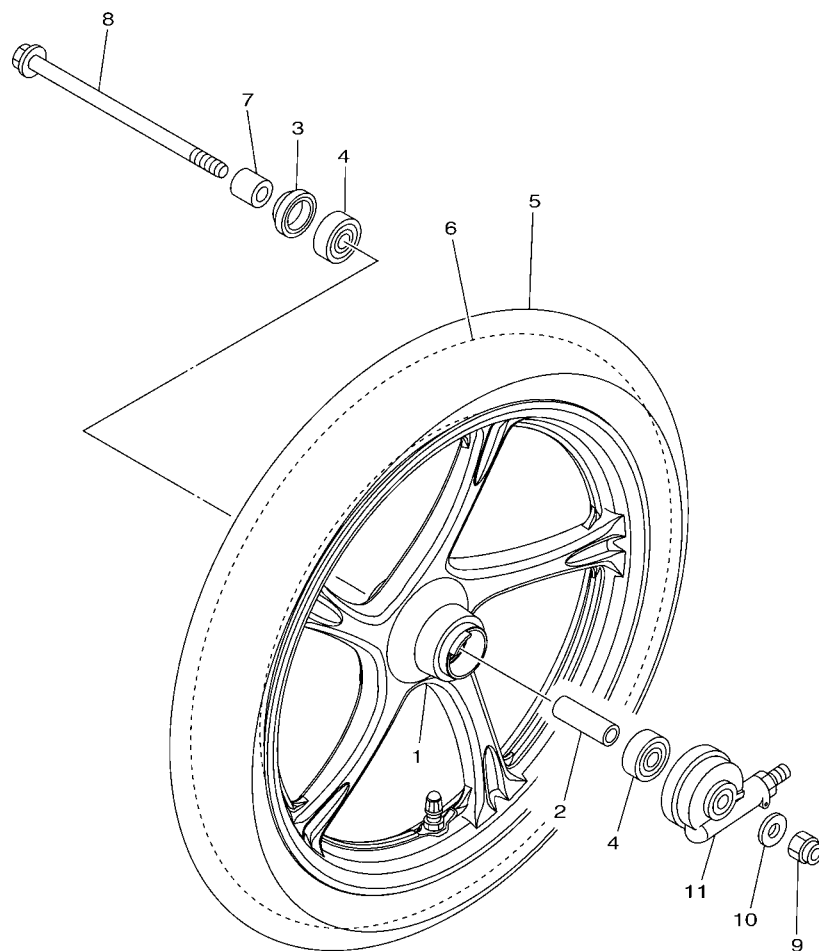


FIG. 22 FRONT WHEEL

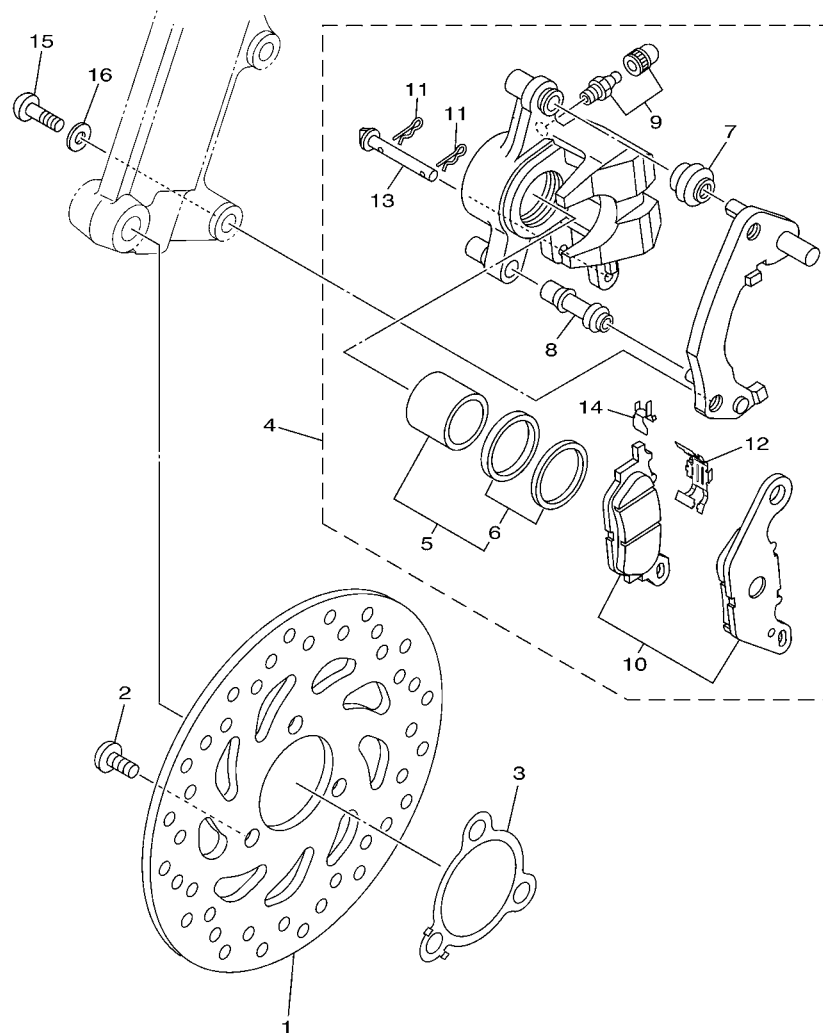


FIG. 23 FRONT BRAKE CALIPER

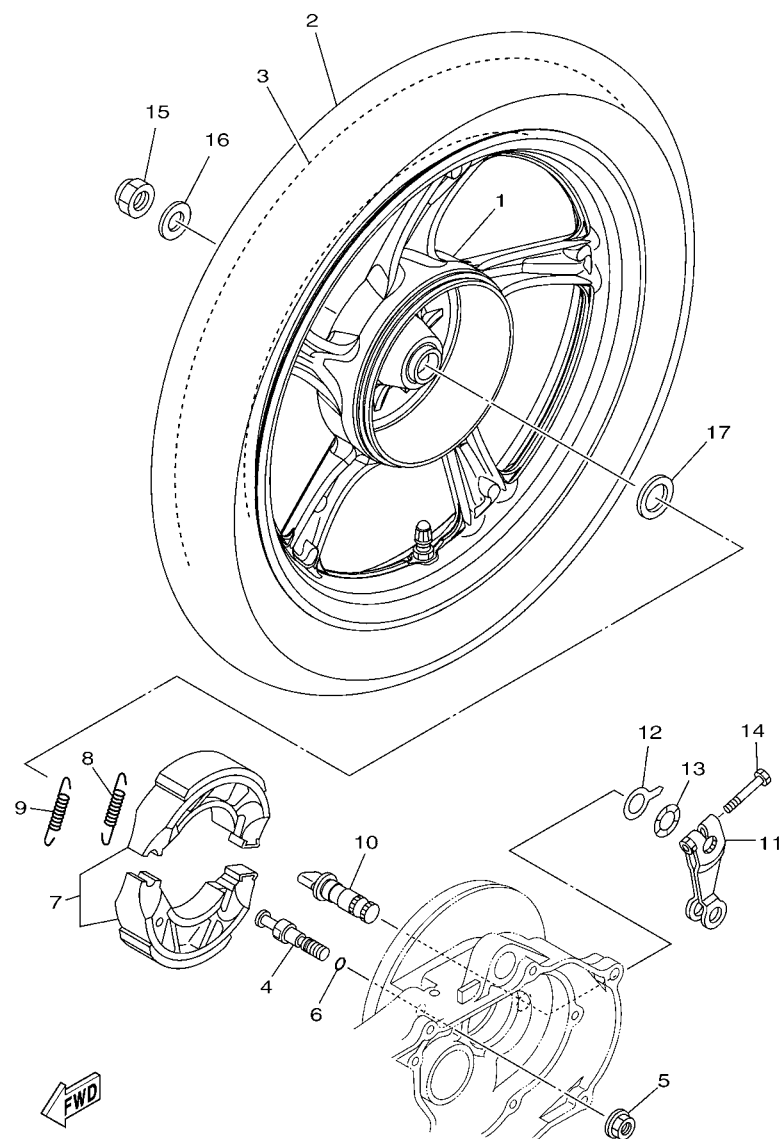


FIG. 24 REAR WHEEL

REF. NO.	PART NO.	DESCRIPTION	1UB1	1UB2	1UB3		REMARKS
1	54P-F5338-00-35	CAST WHEEL, REAR	1		1		SL
	54P-F5338-00-0X	CAST WHEEL, REAR		1			YB/DRSC
2	94108-14802	TIRE (80/90-14M/C 40P NR76)	1	1	1		INOUE
3	94208-14802	TUBE (80/90-14M/C TR4)	1	1	1		INOUE
4	54P-F5326-00	PIN, PIVOT	1	1	1		
5	95702-10500	NUT, FLANGE	1	1	1		
6	93210-07802	O-RING	1	1	1		
7	5MX-F530K-00	BRAKE SHOE SET	1	1	1		
8	90506-12001	SPRING, TENSION	1	1	1		
9	90506-15001	SPRING, TENSION	1	1	1		
10	5MX-F5351-00	CAMSHAFT	1	1	1		
11	5LW-F5355-00	LEVER, CAMSHAFT	1	1	1		
12	5MX-F533A-00	PLATE, INDICATOR	1	1	1		
13	90206-14093	WASHER, WAVE	1	1	1		
14	90101-06046	BOLT	1	1	1		
15	90185-14814	NUT, SELF-LOCKING	1	1	1		
16	90201-14820	WASHER, PLATE	1	1	1		
17	90201-20276	WASHER, PLATE (T=1.0)	1	1	1		

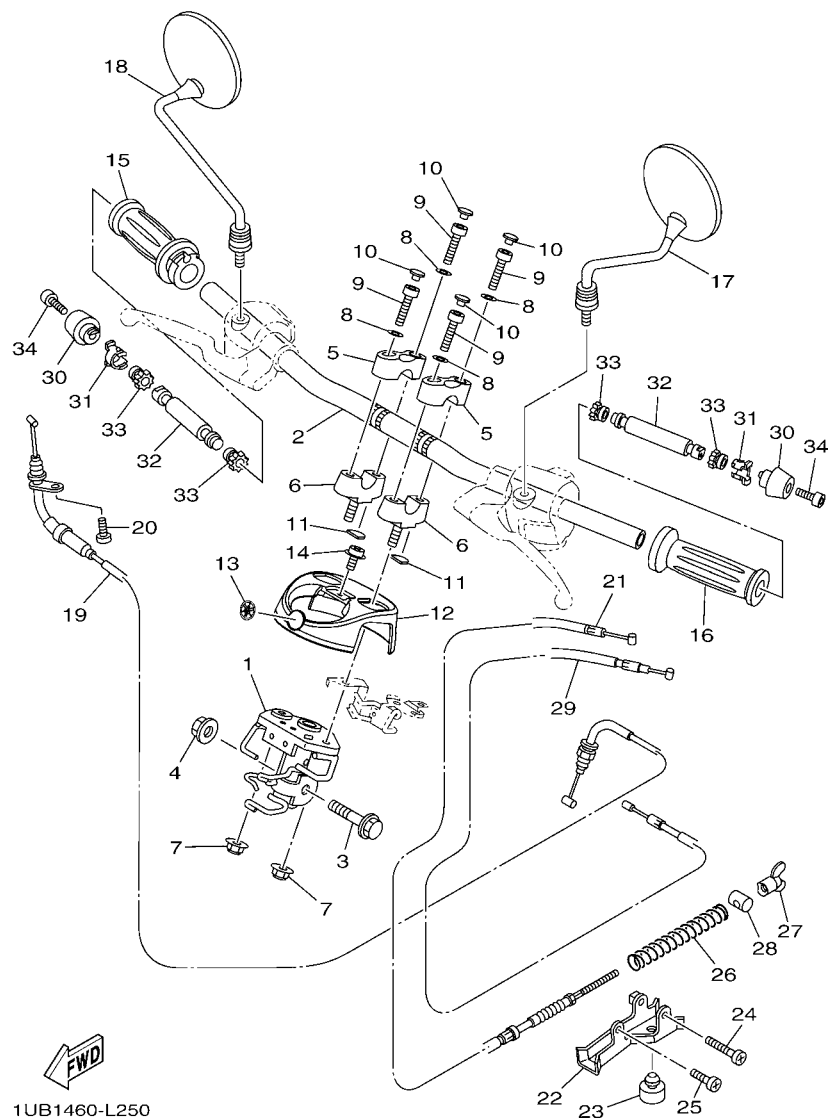


FIG. 25 STEERING HANDLE & CABLE

REF. NO.	PART NO.	DESCRIPTION	1UB1	1UB2	1UB3	REMARKS
1	1UB-F3461-00	BRACKET, HANDLE	1	1	1	
2	1UB-F6112-00	BAR, HANDLE	1	1	1	
3	90105-10036	BOLT, FLANGE	1	1	1	
4	90185-10815	NUT, SELF-LOCKING	1	1	1	
5	1UB-F3441-00	HOLDER, HANDLE UPPER	2	2	2	
6	1UB-F3442-00	HOLDER, HANDLE LOWER	2	2	2	
7	90185-10815	NUT, SELF-LOCKING	2	2	2	
8	90201-08823	WASHER, PLATE	4	4	4	
9	91312-08025	BOLT	4	4	4	
10	90338-08163	PLUG	4	4	4	
11	1UB-F6113-00	DAMPER	2	2	2	
12	1UB-F6143-00-P0	COVER, HAND UPPER 1	1	1	1	SM1
13	14D-F3108-00	EMBLEM	1	1	1	
14	90159-05032	SCREW, WITH WASHER	1	1	1	
15	1UB-F6240-00	GRIP ASSY	1			
	1UB-F6240-10	GRIP ASSY		1		
	1UB-F6240-20	GRIP ASSY			1	
16	1UB-F6241-00	GRIP	1			
	1UB-F6241-10	GRIP		1		
	1UB-F6241-20	GRIP			1	
17	1UB-F6280-00	REAR VIEW MIRROR ASSY (LEFT)	1	1	1	
18	1UB-F6290-00	REAR VIEW MIRROR ASSY (RIGHT)	1	1	1	
19	14D-F6311-00	CABLE, THROTTLE 1	1	1	1	
20	98507-05016	SCREW, PAN HEAD	1	1	1	
21	1UB-F6351-00	CABLE, BRAKE	1	1	1	
22	28D-F637G-00	HOLDER, WIRE	1	1	1	
23	4YY-F7114-00	STOPPER, MAIN STAND	1	1	1	

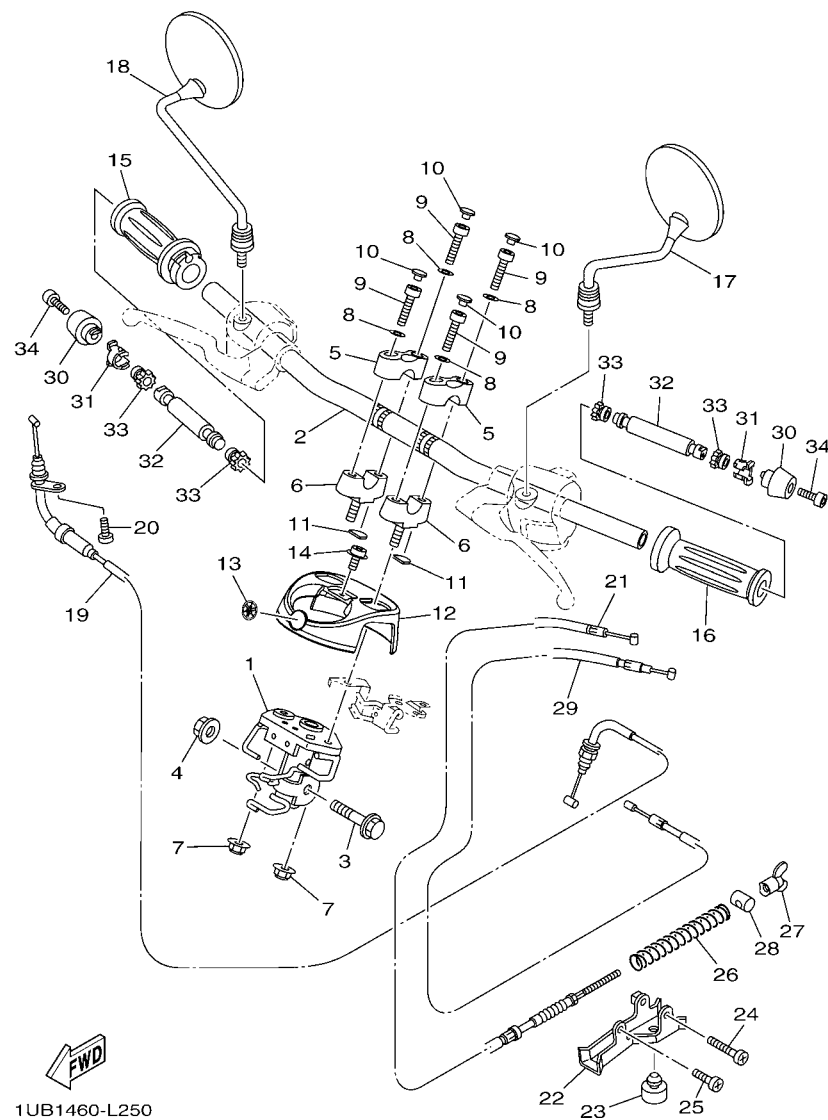


FIG. 25 STEERING HANDLE & CABLE

[illegible]

[illegible]

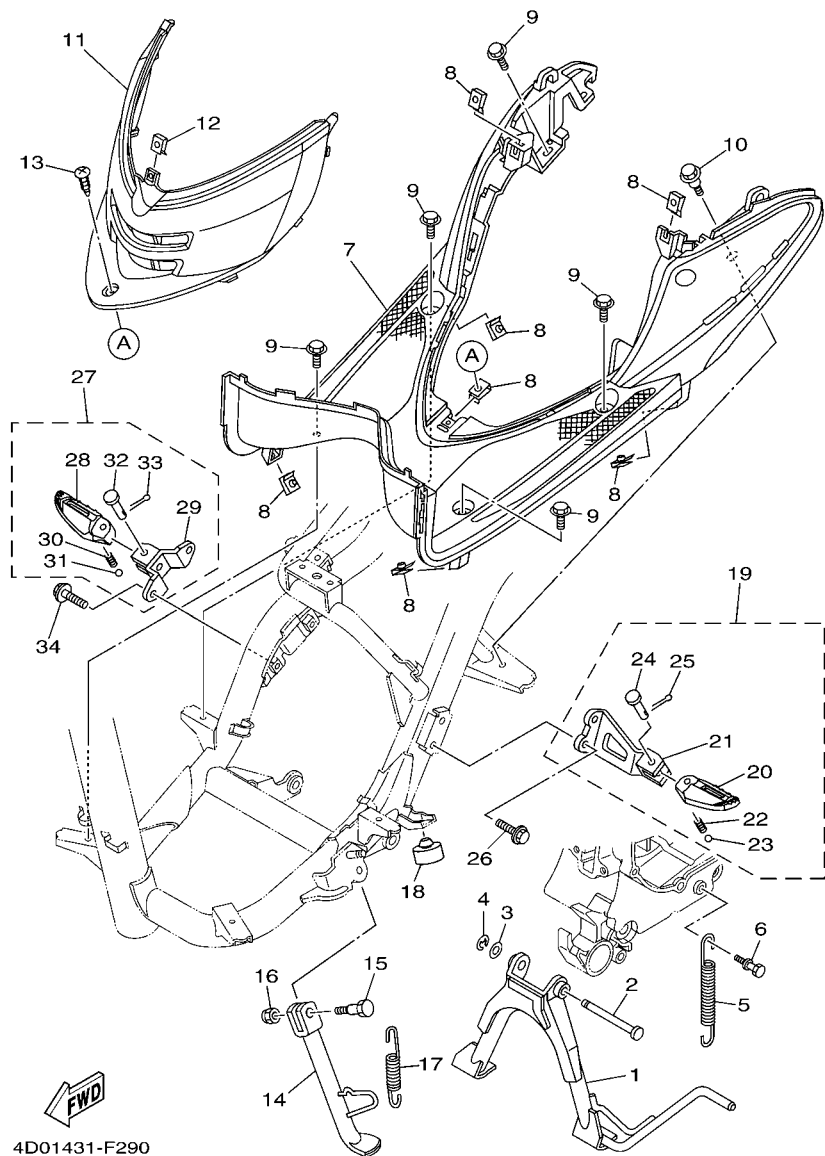


FIG. 27 STAND & FOOTREST

REF. NO.	PART NO.	DESCRIPTION	1UB1	1UB2	1UB3		REMARKS
1	5TL-F7111-01	STAND, MAIN	1	1	1		
2	90249-10002	PIN	1	1	1		
3	90201-10119	WASHER, PLATE	1	1	1		
4	99001-08600	CIRCLIP	1	1	1		
5	90506-35002	SPRING, TENSION	1	1	1		
6	5LW-F7254-00	HOOK	1	1	1		
7	1UB-F7481-00	BOARD, FOOTREST	1	1	1		
8	90183-05807	NUT, SPRING	7	7	7		
9	90119-06044	BOLT, WITH WASHER	5	5	5		
10	90109-06840	BOLT	1	1	1		
11	1UB-F7486-00	COVER 1	1	1	1		
12	90183-05807	NUT, SPRING	1	1	1		
13	97707-50016	SCREW, TRUSS HEAD TAPPING	1	1	1		
14	28D-F7311-00	STAND, SIDE	1	1	1		
15	90109-08881	BOLT	1	1	1		
16	90185-08009	NUT, SELF-LOCKING	1	1	1		
17	90506-20514	SPRING, TENSION	1	1	1		
18	4YY-F7114-00	STOPPER, MAIN STAND	1	1	1		
19	14D-F7430-00	REAR FOOTREST ASSY 1	1	1	1		
20	14D-F7431-00	.FOOTREST, REAR 1	1	1	1		
21	14D-F7432-00	.BRACKET 1	1	1	1		
22	90501-12743	.SPRING, COMPRESSION	1	1	1		
23	93501-04830	.BALL	1	1	1		
24	91701-08035	.PIN	1	1	1		
25	91401-25015	.PIN, COTTER	1	1	1		
26	95802-08016	BOLT, FLANGE	2	2	2		
27	14D-F7440-00	REAR FOOTREST ASSY 2	1	1	1		

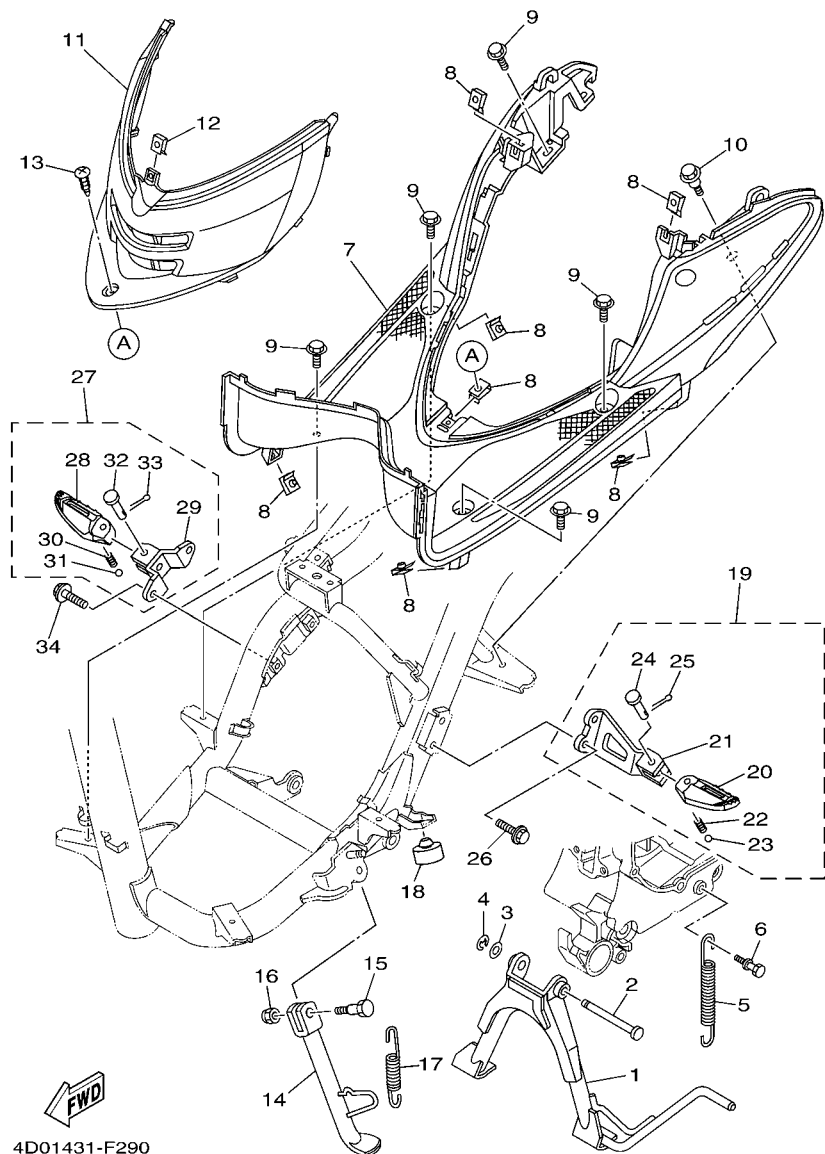


FIG. 27 STAND & FOOTREST

[illegible]

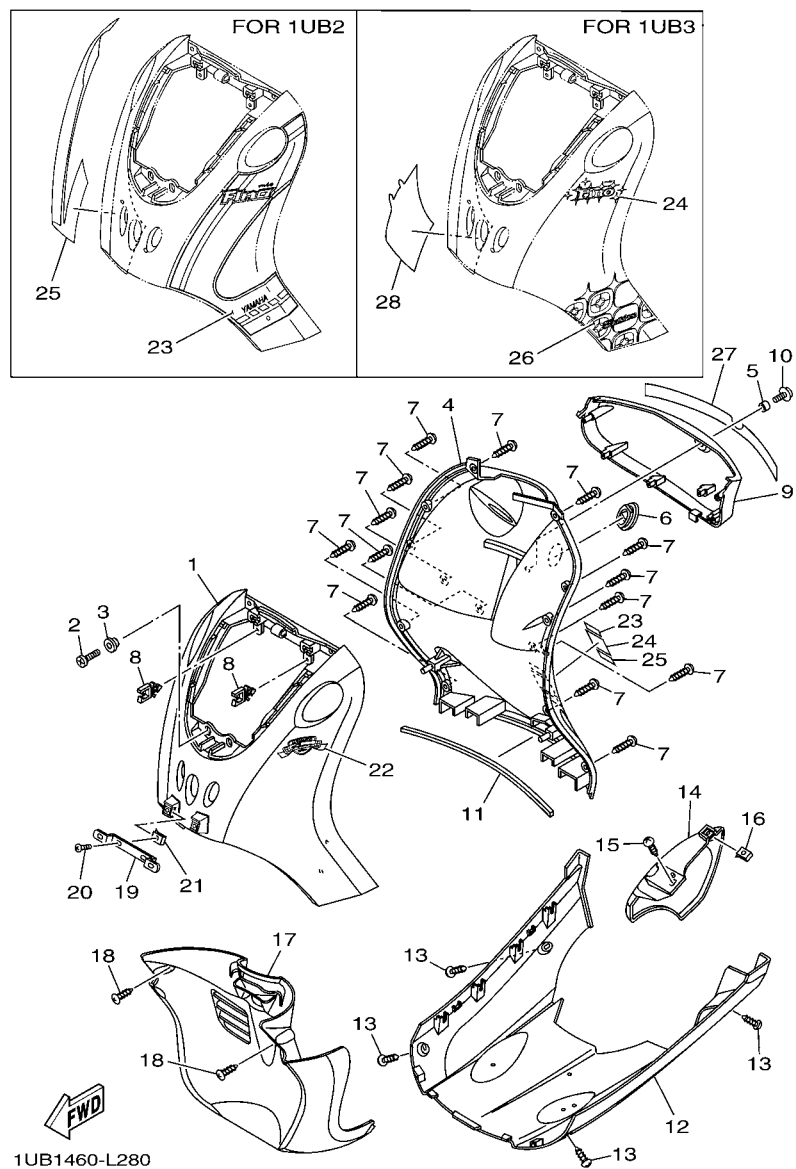


FIG. 28 LEG SHIELD

REF. NO.	PART NO.	DESCRIPTION	1UB1	1UB2	1UB3		REMARKS
1	1UB-F8311-00-P0	LEG SHIELD 1	1				FOR RSM2
	1UB-F8311-00-P1	LEG SHIELD 1	1				FOR DRMK
	1UB-F8311-00-P2	LEG SHIELD 1		1			WM6 FOR RM7,BMC
	1UB-F8311-00-P3	LEG SHIELD 1		1			FOR SMX
	1UB-F8311-00-P5	LEG SHIELD 1			1		FOR PPRM3
	1UB-F8311-00-P4	LEG SHIELD 1			1		FOR LCM4
2	98907-06016	SCREW, BIND	2	2	2		
3	90387-07811	COLLAR	2	2	2		
4	1UB-F8312-00-P0	LEG SHIELD 2	1		1		WM6
	1UB-F8312-00-P1	LEG SHIELD 2		1			RM7 FOR RM7,SMX
	1UB-F8312-00-P2	LEG SHIELD 2		1			FOR BMC
5	90387-08817	COLLAR	1	1	1		
6	1UB-F8349-00	CAP	1	1	1		
7	97707-50016	SCREW, TRUSS HEAD TAPPING	14	14	14		
8	90464-14801	CLAMP	2	2	2		
9	1UB-F836K-00-P0	PANEL, INNER 1	1				FOR RSM2
	1UB-F836K-00-P1	PANEL, INNER 1	1				FOR DRMK
	1UB-F836K-00-P2	PANEL, INNER 1		1			WM6 FOR RM7,BMC
	1UB-F836K-00-P3	PANEL, INNER 1		1			FOR SMX
	1UB-F836K-00-P5	PANEL, INNER 1			1		FOR PPRM3
	1UB-F836K-00-P4	PANEL, INNER 1			1		FOR LCM4
10	90159-06067	SCREW, WITH WASHER	1	1	1		
11	1UB-F8415-00	DAMPER 1	1	1	1		
12	1UB-F8385-00	COVER, UNDER	1	1			
	1UB-F8385-10	COVER, UNDER			1		
13	97707-50016	SCREW, TRUSS HEAD TAPPING	4	4	4		
14	1UB-F8395-00	COVER, UNDER 2	1	1	1		

[illegible]

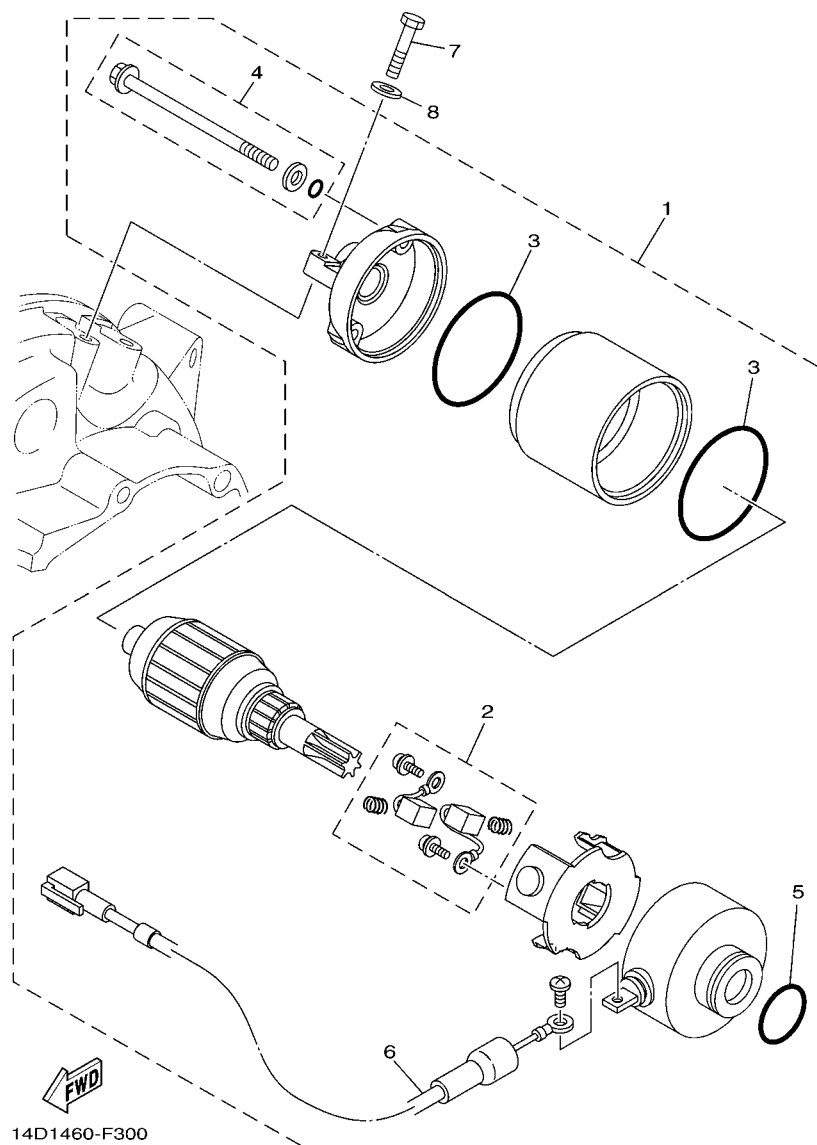


FIG. 30 STARTING MOTOR

[illegible]

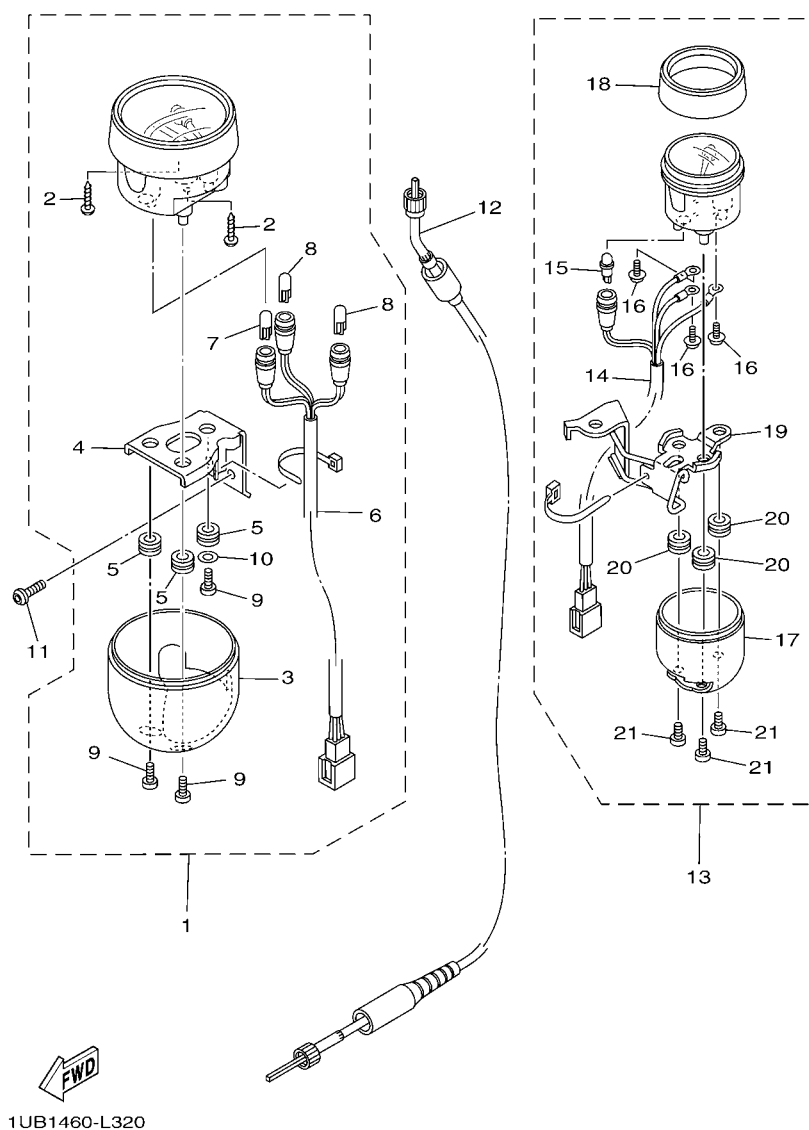


FIG. 32 METER

REF. NO.	PART NO.	DESCRIPTION	1UB1	1UB2	1UB3		REMARKS
1	1UB-H3570-00	SPEEDOMETER ASSY	1	1	1		
2	90167-04021	.SCREW, TAPPING	2	2	2		
3	1UB-H3572-00	.CASE, SPEEDOMETER LOWER	1	1	1		
4	1UB-H355Y-00	.BRACKET, METER 2	1	1	1		
5	1UB-H338V-00	.DAMPER	3	3	3		
6	1UB-H3520-00	.SOCKET CORD ASSY	1	1	1		
7	1UB-H3517-00	.BULB (T-6.5 14V-1.4W)	1	1	1		
8	2GV-H3517-00	.BULB (T-6.5 12V-1.7W)	2	2	2		
9	1UB-H4526-00	.SCREW	3	3	3		
10	5BP-H3524-00	.WASHER, SPECIAL	1	1	1		
11	90149-06308	SCREW	2	2	2		
12	1UB-H3550-00	SPEEDOMETER CABLE ASSY	1	1	1		
13	1UB-H5750-00	FUEL METER ASSY	1	1	1		
14	1UB-H350L-00	.SOCKET ASSY.	1	1	1		
15	1UB-H3751-00	.BULB, LED	1	1	1		
16	90159-03102	.SCREW, WITH WASHER	3	3	3		
17	1UB-H353H-00	.CASE, UNDER	1	1	1		
18	1UB-H353G-00	.CASE, UPPER	1	1	1		
19	1UB-H354B-00	.BRACKET, METER	1	1	1		
20	1UB-H338V-00	.DAMPER	3	3	3		
21	1UB-H4526-00	.SCREW	3	3	3		

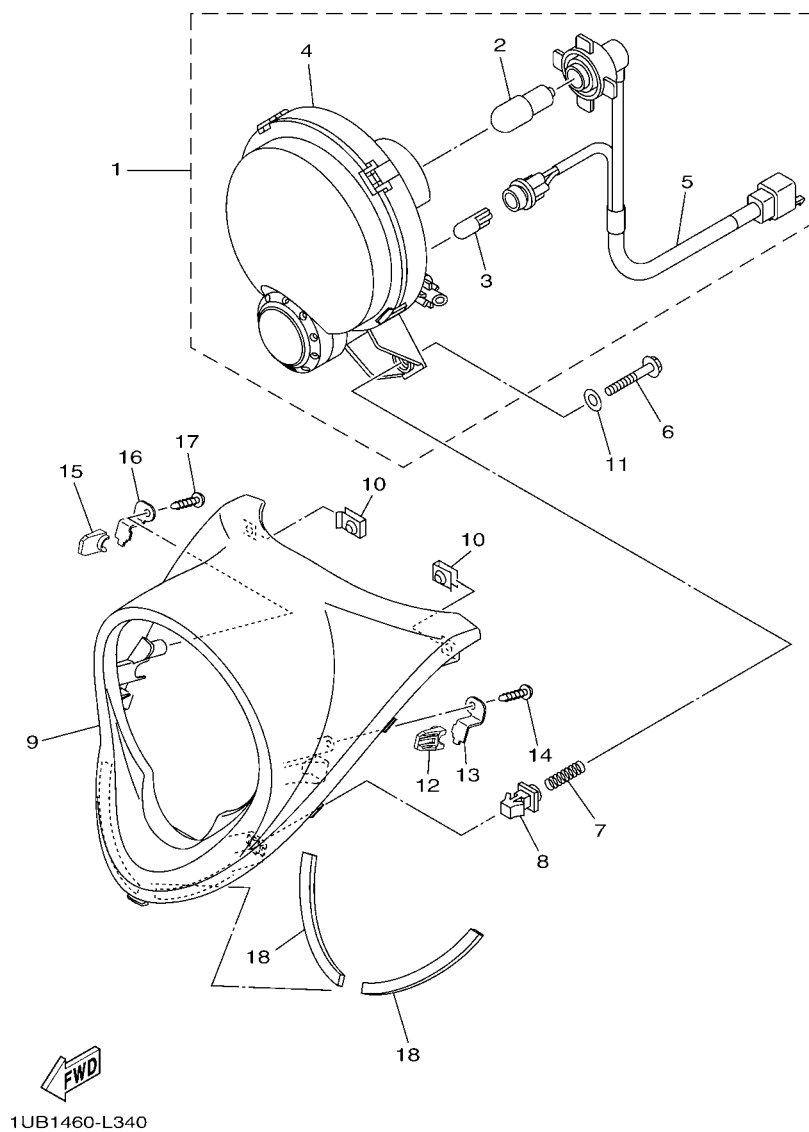
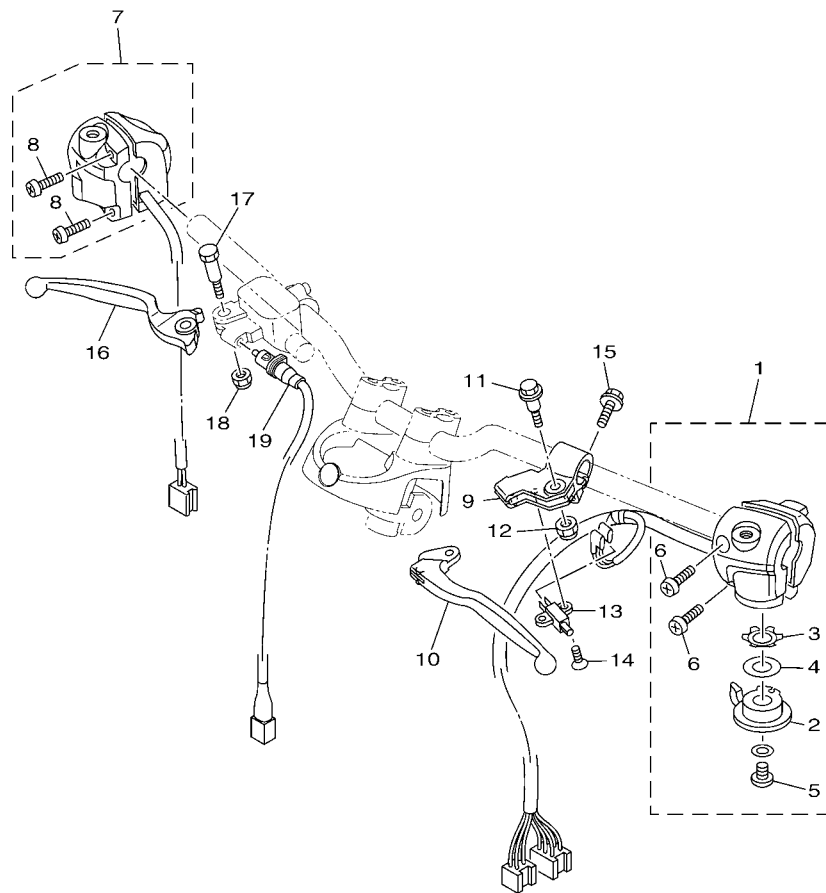


FIG. 33 HEADLIGHT

REF. NO.	PART NO.	DESCRIPTION	1UB1	1UB2	1UB3		REMARKS
1	1UB-H4310-00	HEADLIGHT UNIT ASSY	1	1	1		
2	5HV-H4314-00	.BULB (12V-32/32W)	1	1	1		
3	2P0-H3516-00	.BULB (12V-3.4W)	1	1	1		
4	1UB-H4103-00	.HEADLIGHT UNIT ASSY	1	1	1		
5	1UB-H4312-00	.CORD ASSY	1	1	1		
6	1UB-H4331-00	SCREW, RIM ADJUSTING	1	1	1		
7	1UB-H4332-00	SPRING, SCREW	1	1	1		
8	4D0-H4334-00	NUT, ADJUSTING	1	1	1		
9	1UB-H4144-00-P0	COVER, HEADLIGHT	1				SM1
	1UB-H4144-00-P1	COVER, HEADLIGHT		1			SMX FOR RM7,BMC
	1UB-H4144-00-P2	COVER, HEADLIGHT		1			RM7 FOR SMX
	1UB-H4144-00-P3	COVER, HEADLIGHT			1		WM6
10	90183-05807	NUT, SPRING	2	2	2		
11	1UB-F8483-00	PLATE, RUBBER 1	1	1	1		
12	1UB-H411T-00	HOLDER, 1	1	1	1		
13	1UB-H4781-00	BRACKET 1	1	1	1		
14	97707-50016	SCREW, TRUSS HEAD TAPPING	1	1	1		
15	1UB-H411U-00	HOLDER, 2	1	1	1		
16	1UB-H4782-00	BRACKET 2	1	1	1		
17	97707-50016	SCREW, TRUSS HEAD TAPPING	1	1	1		
18	1UB-F8372-00	DAMPER	2	2	2		




 1UB1460-L350

FIG. 35 HANDLE SWITCH & LEVER

REF. NO.	PART NO.	DESCRIPTION	1UB1	1UB2	1UB3			REMARKS
1	1UB-H3973-00	SWITCH, HANDLE 3	1	1	1			
2	5TL-H3941-00	.LEVER, STARTER (BLACK)	1	1	1			
3	5TL-H3947-00	.SPRING	1	1	1			
4	5TL-H397X-00	.SPACER	1	1	1			
5	9850L-06008	.SCREW, PAN HEAD	1	1	1			
6	9850M-05020	.SCREW, PAN HEAD	2	2	2			
7	1UB-H3976-00	SWITCH, HANDLE 1	1	1	1			
8	9850M-05020	.SCREW, PAN HEAD	2	2	2			
9	1UB-H2911-00	HOLDER, LEVER 1	1	1	1			
10	5TL-H3912-20	LEVER 1	1	1	1			
11	90109-06798	BOLT	1	1	1			
12	95602-06100	NUT, U	1	1	1			
13	5TL-H3980-10	FRONT STOP SWITCH ASSY	1	1	1			
14	98702-03008	SCREW, FLAT HEAD	1	1	1			
15	95022-06020	BOLT, FLANGE	1	1	1			
16	5TL-H3922-00	LEVER 2	1	1	1			
17	90109-06255	BOLT	1	1	1			
18	95602-06100	NUT, U	1	1	1			
19	1UB-H3980-00	FRONT STOP SWITCH ASSY	1	1	1			

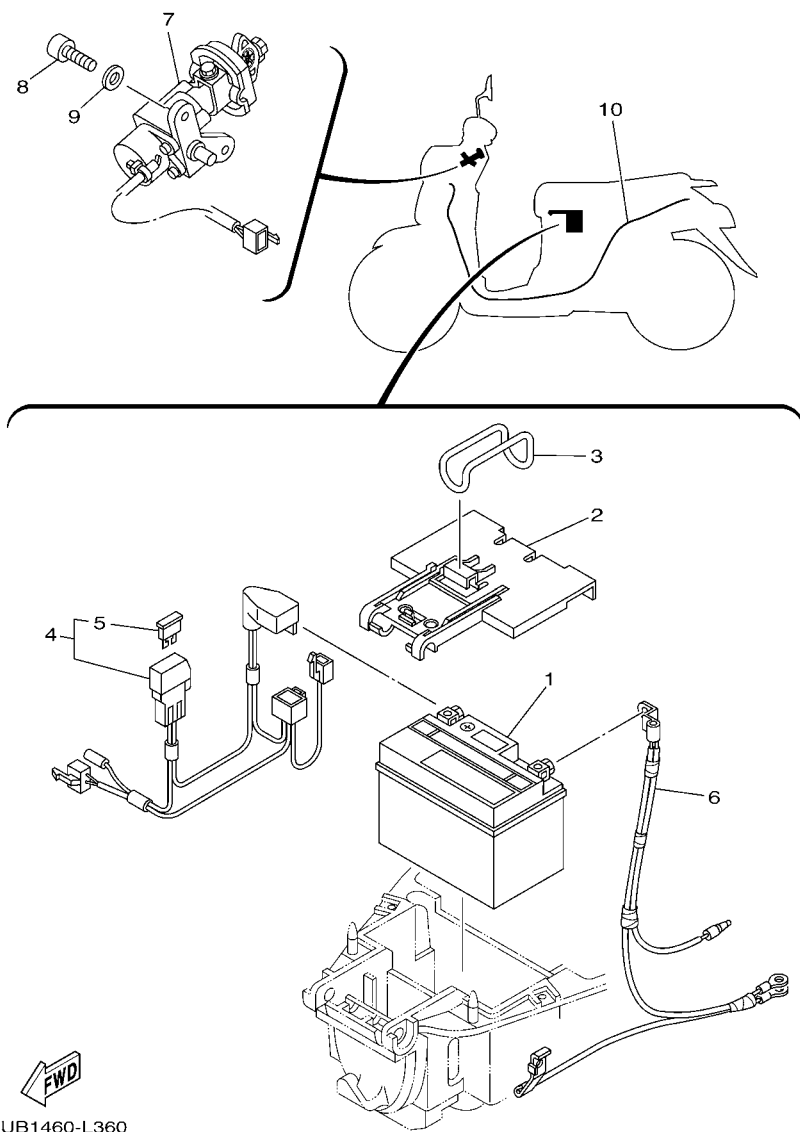


FIG. 36 ELECTRICAL 1

[illegible]

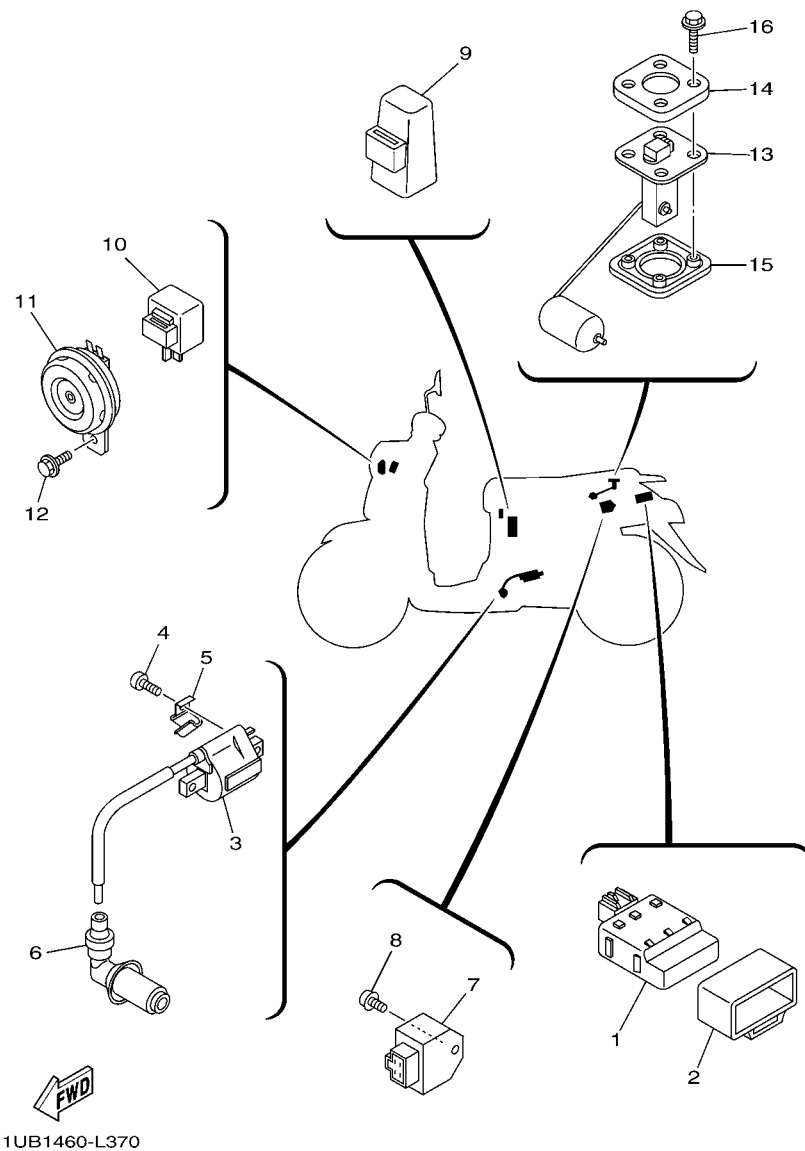


FIG. 37 ELECTRICAL 2

NUMERICAL INDEX

PART NO.	REF. NO.	PART NO.	REF. NO.	PART NO.	REF. NO.	PART NO.	REF. NO.	PART NO.	REF. NO.	PART NO.	REF. NO.
5LW-11133-10	1 - 2	5LW-E2111-00	3 - 1	14D-E4170-00	8 - 27	5WP-E5150-12	10 - 1	5TL-E7465-00	13 - 27	14D-F1691-00	7 - 26
5LW-11134-10	1 - 3	28D-E2113-00	3 - 5	5TL-E4171-00	8 - 33	51S-E5150-30	10 - 1	5TL-E7465-10	13 - 28	1UB-F1711-00-P0	17 - 3
33M-12117-01	3 - 7	5MX-E2116-00	3 - 4	4D0-E4173-00	8 - 31	14D-E5191-00	11 - 7	5TL-E7611-00	13 - 18	1UB-F1711-00-P1	17 - 3
22F-12159-00	3 - 9	5TL-E2118-00	3 - 6	5TL-E4174-00	8 - 32	14D-E5315-00	11 - 21	5LW-E7620-00	13 - 10	1UB-F1711-00-P2	17 - 3
663-14159-00	8 - 17	5MX-E2119-00	3 - 3	28D-E4191-00	8 - 23	14D-E5316-00	11 - 28	5TL-E7623-00	13 - 13	1UB-F1711-00-P3	17 - 3
4JH-14160-00	8 - 14	5LW-E2121-00	3 - 2	28D-E4196-00	8 - 35	14D-E5333-00	11 - 15	5TL-E7641-01	13 - 17	1UB-F1711-00-P4	17 - 3
3TJ-14536-40	8 - 28	2P2-E2151-00	3 - 8	5TL-E4275-00	8 - 29	5LW-E5351-00	5 - 4	5TL-E7660-00	13 - 25	1UB-F1711-00-P5	17 - 3
676-14548-00	8 - 19	4ST-E2156-00	3 - 11	5TL-E4280-00	8 - 30	28D-E5362-00	10 - 34	5TL-E7664-00	13 - 29	1UB-F1721-00-P0	17 - 4
4TV-14557-00	8 - 25	4CW-E2157-00	4 - 15	4D0-E4357-00	8 - 38	5LW-E5363-00	10 - 26	5TL-E7668-00	13 - 32	1UB-F1721-00-P1	17 - 4
3TJ-14562-40	8 - 16	5TL-E2170-00	4 - 1	14D-E4411-00	7 - 7	5TL-E5371-00	10 - 5	5TL-E7670-00	13 - 26	1UB-F1721-00-P2	17 - 4
3TJ-14564-40	8 - 6	5LW-E2170-10	4 - 1	14D-E4412-00	7 - 8	5LW-E5371-01	11 - 3	5TL-E7683-00	13 - 30	1UB-F1721-00-P3	17 - 4
688-14592-00	8 - 20	5MX-E2176-00	4 - 3	14D-E4417-00	7 - 18	5TL-E5373-00	10 - 6	5TL-E7684-00	13 - 31	1UB-F1721-00-P4	17 - 4
5BF-14919-00	8 - 36	5MX-E2210-10	4 - 9	14D-E4437-00	7 - 15	14D-E5407-01	11 - 14	1UB-F1110-00	15 - 1	1UB-F1721-00-P5	17 - 4
3TJ-14952-40	8 - 15	5MX-E2213-01	4 - 10	28D-E443E-00	7 - 12	14D-E5408-00	10 - 7	28D-F1161-10	19 - 34	1UB-F1721-00-P0	17 - 1
5LW-15659-01	11 - 6	5VV-E2231-00	4 - 7	4ST-E443E-00	11 - 4	14D-E5411-10	11 - 1	1UB-F117K-00	21 - 14	1UB-F172W-00-P1	17 - 1
4VP-17632-00	13 - 12	5MX-E2241-00	4 - 8	5TL-E4452-00	7 - 11	14D-E5413-00	11 - 26	14D-F1278-00	15 - 2	1UB-F172W-00-P2	17 - 1
5LW-17653-00	13 - 14	5LW-E2611-00	6 - 18	5TL-E4453-00	7 - 10	5LW-E5417-00	10 - 14	28D-F1410-00	15 - 3	1UB-F1731-00-P0	17 - 6
18G-23411-00	19 - 17	5TL-E2631-10	6 - 21	5TL-E4462-00	7 - 17	14D-E5421-00	10 - 28	5TL-F1459-00	15 - 10	1UB-F1731-00-P1	17 - 6
22F-23411-01	19 - 27	5TL-E2633-00	6 - 23	14D-E4467-00	7 - 16	5LW-E5451-00	11 - 2	1UB-F1511-00-P0	16 - 1	1UB-F1731-00-P2	17 - 6
156-23412-00	19 - 24	5LW-E2651-00	6 - 1	5TL-E4531-00	8 - 26	5LW-E5453-00	10 - 17	1UB-F1511-00-P1	16 - 1	1UB-F173D-00	17 - 12
22F-23412-01	19 - 26	5LW-E2652-00	6 - 3	1UB-E4610-00	9 - 1	14D-E5461-00	10 - 29	1UB-F1511-00-P2	16 - 1	1UB-F174D-00	17 - 13
5TL-2341E-00	19 - 25	14D-E2653-10	6 - 5	14D-E4613-00	9 - 14	14D-E5471-00	11 - 31	1UB-F1511-00-P3	16 - 1	1UB-F1781-00	17 - 18
5TL-2341E-10	19 - 28	5LW-E2658-00	6 - 2	28D-E4714-00	9 - 18	14D-E5472-00	11 - 16	1UB-F1511-00-P4	16 - 1	1UB-F1781-10	17 - 18
36Y-2589H-00	26 - 8	5LW-E2659-02	6 - 7	28D-E4718-00	9 - 2	14D-E5473-00	11 - 29	1UB-F1511-00-P5	16 - 1	1UB-F179J-00	17 - 21
14D-E1102-30	1 - 1	5LW-E2668-02	6 - 8	5TL-E4747-00	9 - 10	5TL-E5475-00	11 - 19	3S0-F153E-00	17 - 20	1UB-F179J-10	17 - 21
5LW-E111F-00	4 - 12	5TL-E2669-00	6 - 9	28D-E4770-00	9 - 4	14D-E5477-00	11 - 32	3S0-F153E-10	17 - 20	1UB-F179K-00	17 - 23
5MX-E1145-00	4 - 4	5TL-E2681-10	6 - 22	5TL-E479M-20	9 - 11	14D-E5481-00	11 - 27	1UB-F1511-00-P5	17 - 20	1UB-F179K-10	17 - 23
28D-E1155-00	1 - 12	5TL-E2682-00	6 - 4	14D-E4803-01	9 - 24	14D-E5484-00	11 - 30	3S0-F153E-30	17 - 20	1UB-F179L-00	17 - 14
28D-E1165-00	1 - 10	28D-E3185-00	1 - 11	28D-E4871-00	1 - 8	14D-E5492-00	11 - 20	1UB-F1552-00	28 - 17	1UB-F179L-10	17 - 14
5LW-E1181-00	1 - 21	28D-E3300-10	5 - 1	5TL-E4872-00	9 - 19	5TL-E5494-00	11 - 22	1UB-F1552-10	28 - 17	1UB-F179L-20	17 - 14
28D-E1185-00	1 - 9	5TL-E3324-00	2 - 10	14D-E4881-10	9 - 20	14D-E5497-00	11 - 18	1UB-F1565-00	16 - 6	1UB-F179M-00	17 - 16
4ST-E1186-00	1 - 15	5LW-E3411-00	5 - 5	14D-E4901-10	8 - 1	5MX-E5521-00	12 - 6	1UB-F1565-10	16 - 6	1UB-F179M-10	17 - 16
4YS-E1198-00	10 - 37	5LW-E3416-00	10 - 22	14D-E4916-00	8 - 3	28D-E5524-00	12 - 1	1UB-F1569-00	16 - 7	1UB-F179M-20	17 - 16
51S-E1310-20	1 - 25	5LW-E3452-00	2 - 7	5TL-E4922-00	8 - 24	5LW-E5532-00	12 - 8	1UB-F1569-10	16 - 7	1UB-F179P-00	17 - 19
5LW-E1351-00	1 - 26	5MX-E3474-01	7 - 6	4D0-E4923-00	8 - 13	5VV-E5570-10	12 - 4	1UB-F1569-20	16 - 7	1UB-F179P-10	17 - 19
5MX-E1391-00	10 - 23	5LW-E3475-00	5 - 2	5TL-E4933-00	8 - 7	28D-E5601-00	12 - 10	1UB-F1570-00	16 - 5	1UB-F179S-00	17 - 22
14D-E1400-00	2 - 1	14D-E3542-00	9 - 26	4D0-E4936-00	8 - 5	5MX-E5620-01	12 - 16	1UB-F1570-10	16 - 5	1UB-F179S-10	17 - 22
5TL-E1412-10	2 - 2	5TL-E3543-00	9 - 29	5TL-E4940-00	8 - 2	4VP-E5630-00	12 - 18	1UB-F1579-00	16 - 8	1UB-F17A1-00	17 - 15
5TL-E1422-10	2 - 6	5TL-E3545-00	9 - 25	4D0-E4943-00	8 - 11	51S-E5650-00	12 - 5	1UB-F1579-10	16 - 8	1UB-F17A1-10	17 - 15
5MX-E1603-10	2 - 15	5MX-E3556-01	7 - 3	5TL-E4945-00	8 - 37	5MX-E5657-00	13 - 20	1UB-F1579-20	16 - 8	1UB-F17A2-00	17 - 17
5MX-E1605-10	2 - 15	5LW-E3569-00	6 - 20	5TL-E4947-00	8 - 9	5MX-E5673-00	12 - 19	1UB-F1599-00	16 - 9	1UB-F17A2-10	17 - 17
5MX-E1607-10	2 - 15	5MX-E3575-01	7 - 20	5TL-E4948-02	8 - 12	28D-E6111-00	13 - 1	1UB-F1599-10	16 - 9	5TL-F2123-00	10 - 4
5MX-E1631-00	2 - 12	28D-E3585-00	7 - 1	5TL-E4984-00	8 - 21	2D5-E6111-00	13 - 1	1UB-F15A9-00	16 - 10	28D-F2210-01	18 - 1
5MX-E1633-10	2 - 13	5MX-E3595-10	7 - 2	5TL-E4985-00	8 - 18	5TL-E6611-03	13 - 24	1UB-F15A9-10	16 - 10	5MX-F2216-00	10 - 3
5MX-E1636-00	2 - 12	5LW-E3769-00	10 - 35	14D-E4987-00	1 - 27	14D-E6620-00	13 - 23	1UB-F1611-00	16 - 11	1UB-F3100-00	19 - 1
5MX-E1638-00	2 - 12	4D0-E4133-00	8 - 4	28D-E4D25-00	8 - 8	5TL-E7211-00	14 - 7	14D-F1621-00	16 - 15	14D-F3108-00	25 - 13
5MX-E1651-10	2 - 5	5TL-E4135-00	8 - 34	5LW-E5113-00	10 - 33	5TL-E7410-10	14 - 1	14D-F163A-00	16 - 16	28D-F3110-00	19 - 8
5MX-E1681-10	2 - 3	14D-E414G-00	8 - 10	5VV-E5150-11	10 - 1	5TL-E7421-10	14 - 6	14D-F163E-00	16 - 17	28D-F3111-00	19 - 19

NUMERICAL INDEX

PART NO.	REF. NO.	PART NO.	REF. NO.	PART NO.	REF. NO.	PART NO.	REF. NO.	PART NO.	REF. NO.	PART NO.	REF. NO.
54P-F3126-00	19 - 5	5TL-F4780-00	21 - 11	1S7-F6257-00	25 - 31	1UB-F83G8-20	28 - 23	5MX-H3371-00	37 - 11	1UB-H472C-00	34 - 3
54P-F3136-00	19 - 2	1UB-F478E-00	21 - 16	1UB-F6280-00	25 - 17	1UB-F83G9-00	28 - 25	1UB-H338V-00	32 - 5	1UB-H4735-00	34 - 4
28D-F3141-00	19 - 15	5TL-F4792-00	21 - 12	1UB-F6290-00	25 - 18	1UB-F83G9-10	28 - 25		32 - 20	1UB-H4781-00	33 - 13
5LM-F3144-00	19 - 14	54P-F5168-00-0X	22 - 1	14D-F6311-00	25 - 19	1UB-F83G9-20	28 - 25	1UB-H350L-00	32 - 14	1UB-H4782-00	33 - 16
3AY-F3145-00	19 - 3	54P-F5168-00-35	22 - 1	14D-F6331-00	25 - 29	1UB-F83GA-00	28 - 27	2P0-H3516-00	33 - 3	5TL-H5540-11	37 - 1
	19 - 6	3AY-F5181-01	22 - 8	1UB-F6351-00	25 - 21	1UB-F83GA-10	28 - 27	1UB-H3517-00	32 - 7	5LL-H5546-00	37 - 2
2JG-F3147-00	19 - 20	5TL-F5181-01	15 - 12	28D-F637G-00	25 - 22	1UB-F83GB-00	28 - 24	2GV-H3517-00	32 - 8	1UB-H5750-00	32 - 13
5D9-F3152-00	19 - 11	54P-F518A-00	23 - 3	5TL-F7111-01	27 - 1	1UB-F83GB-10	28 - 24	1UB-H3520-00	32 - 6	14D-H5752-00	37 - 13
5P0-F3153-00	19 - 23	5TL-F5190-01	22 - 11	4YY-F7114-00	25 - 23	1UB-F83GC-00	28 - 26	5BP-H3524-00	32 - 10	4US-H5753-00	37 - 15
5P0-F3156-00	19 - 4	5MX-F530K-00	24 - 7		27 - 18	1UB-F83GC-10	28 - 26	1UB-H353G-00	32 - 18	5ER-H5757-00	37 - 14
	19 - 7	54P-F5326-00	24 - 4	5MX-F7114-00	15 - 6	1UB-F83GD-00	28 - 28	1UB-H353H-00	32 - 17	5P0-W0041-00	26 - 5
2JG-F3157-00	19 - 10	54P-F5338-00-0X	24 - 1	5MX-F7121-00	10 - 2	1UB-F83GD-10	28 - 28	1UB-H354B-00	32 - 19	4C9-W0048-00	23 - 9
509-F3158-L0	19 - 12	54P-F5338-00-35	24 - 1	5LW-F7254-00	27 - 6	1UB-F8415-00	28 - 11	1UB-H3550-00	32 - 12	14D-WE445-10	7 - 9
4D0-F3165-00	19 - 22	5MX-F533A-00	24 - 12	28D-F7311-00	27 - 14	1UB-F8483-00	33 - 11	1UB-H355Y-00	32 - 4	14D-XH252-02	36 - 7
28D-F3170-00	19 - 9	5MX-F5351-00	24 - 10	14D-F7430-00	27 - 19	5TL-H1410-11	29 - 2	1UB-H3570-00	32 - 1	90101-06046	24 - 14
278-F3181-50	19 - 13	5LW-F5355-00	24 - 11	14D-F7431-00	27 - 20	5TL-H1450-02	29 - 1	1UB-H3572-00	32 - 3	90105-06804	6 - 17
28D-F3340-00	19 - 16	5P0-F5802-00	23 - 5	14D-F7432-00	27 - 21	5TL-H1800-00	30 - 1	1UB-H3751-00	32 - 15	90105-08048	15 - 8
4D0-F3346-00	19 - 18	5YP-F5803-50	23 - 6	14D-F7440-00	27 - 27	5TL-H1801-00	30 - 2	5TL-H3912-20	35 - 10	90105-08861	18 - 2
1UB-F334G-00	19 - 21	3C1-F5805-10	23 - 10	14D-F7441-00	27 - 28	3UH-H1828-01	30 - 4	5TL-H3922-00	35 - 16	90105-10036	25 - 3
5TL-F3416-00	19 - 29	54P-F580U-00	23 - 4	14D-F7442-00	27 - 29	5TL-H182L-00	30 - 5	5TL-H3941-00	35 - 2	90105-10066	15 - 4
1UB-F3441-00	25 - 5	54P-F582U-00	23 - 1	1UB-F7481-00	27 - 7	5TL-H182M-00	30 - 3	5TL-H3947-00	35 - 3	90109-06202	21 - 6
1UB-F3442-00	25 - 6	20B-F583T-01	26 - 4	1UB-F7486-00	27 - 11	5TL-H183G-00	30 - 6	1UB-H3973-00	35 - 1	90109-06255	35 - 17
1UB-F3461-00	25 - 1	20B-F5852-00	26 - 7	5TL-F8100-00	15 - 17	5TP-H1940-00	37 - 9	1UB-H3976-00	35 - 7	90109-063F1	16 - 12
1UB-F4110-00	20 - 1	5P0-F5854-00	26 - 6	1UB-F8311-00-P0	28 - 1	5TL-H1960-00	37 - 7	5TL-H397X-00	35 - 4	90109-06798	35 - 11
14D-F4181-00	20 - 4	5P0-F5855-00	26 - 9	1UB-F8311-00-P1	28 - 1	14D-H2100-00	36 - 1	1UB-H3980-00	35 - 19	90109-06840	27 - 10
14D-F4188-00	20 - 2	4D0-F5867-00	26 - 10	1UB-F8311-00-P2	28 - 1	14D-H2100-10	36 - 1	5TL-H3980-10	35 - 13	90109-08881	27 - 15
14D-F4311-00	20 - 6	14D-F5872-00	26 - 1	1UB-F8311-00-P3	28 - 1	5TL-H2116-00	36 - 6	1UB-H4103-00	33 - 4	90110-06846	10 - 31
14D-F4312-00	20 - 7	28D-F5875-00	19 - 31	1UB-F8311-00-P4	28 - 1	14D-H2129-00	36 - 2	1UB-H411T-00	33 - 12	90110-06849	10 - 32
14D-F4313-00	20 - 8	28D-F5876-00	19 - 32	1UB-F8311-00-P5	28 - 1	5TL-H2131-00	36 - 3	1UB-H411U-00	33 - 15	90111-06807	9 - 3
14D-F4500-00	20 - 12	5YP-F5917-00	23 - 7	1UB-F8312-00-P0	28 - 4	14D-H2150-01	36 - 4	1UB-H4140-00	31 - 4	90111-08815	23 - 2
14D-F4514-00	20 - 5	5P0-F5919-00	23 - 12	1UB-F8312-00-P1	28 - 4	5TL-H2151-00	36 - 5	1UB-H4144-00-P0	33 - 9	90116-08841	1 - 5
4YY-F4610-00	20 - 15	5YP-F5924-00	23 - 13	1UB-F8312-00-P2	28 - 4	5TL-H2310-10	37 - 3	1UB-H4144-00-P1	33 - 9	90119-05071	37 - 16
4YY-F4612-00	20 - 16	5YP-F5925-01	23 - 11	1UB-F8338-00	28 - 22	5MX-H2370-00	37 - 6	1UB-H4144-00-P2	33 - 9	90119-05804	11 - 17
1UB-F470F-00	21 - 2	5YP-F5937-00	23 - 8	1UB-F8338-10	28 - 22	1UB-H2590-00	36 - 10	1UB-H4144-00-P3	33 - 9	90119-06044	27 - 9
1UB-F470F-10	21 - 2	5YP-F5939-00	23 - 14	1UB-F8349-00	28 - 6	1UB-H2911-00	35 - 9	1UB-H4150-00	31 - 8	90119-06182	7 - 21
1UB-F470F-20	21 - 2	1UB-F6112-00	25 - 2	1UB-F8356-00	15 - 15	1UB-H3310-00	31 - 1	1UB-H4310-00	33 - 1	90119-06211	7 - 22
5TL-F4726-00	21 - 9	1UB-F6113-00	25 - 11	1UB-F836K-00-P0	28 - 9	5HV-H3311-00	31 - 2	1UB-H4312-00	33 - 5	90149-06308	32 - 11
5TL-F4727-00	21 - 8	1UB-F6143-00-P0	25 - 12	1UB-F836K-00-P1	28 - 9		31 - 6	5HV-H4314-00	33 - 2	90149-10804	23 - 15
1UB-F4730-00	21 - 1	5TL-F6199-00	21 - 5	1UB-F836K-00-P2	28 - 9		31 - 11	1UB-H4331-00	33 - 6	90153-06803	1 - 6
1UB-F4730-10	21 - 1	1S7-F622F-00	25 - 33	1UB-F836K-00-P3	28 - 9		31 - 14	1UB-H4332-00	33 - 7	90159-03102	32 - 16
1UB-F4730-20	21 - 1	1S7-F622H-00	25 - 32	1UB-F836K-00-P4	28 - 9	1UB-H3312-00	31 - 3	4D0-H4334-00	33 - 8	90159-05032	25 - 14
14D-F473R-00	21 - 4	1UB-F6240-00	25 - 15	1UB-F836K-00-P5	28 - 9	1UB-H331E-00	31 - 12	1UB-H4526-00	32 - 9	90159-06033	11 - 33
14D-F4741-00	21 - 3	1UB-F6240-10	25 - 15	1UB-F8372-00	33 - 18	1UB-H3320-00	31 - 5		32 - 21	90159-06054	21 - 15
1UB-F4773-00-P0	21 - 17	1UB-F6240-20	25 - 15	1UB-F8385-00	28 - 12	1UB-H3322-00	31 - 7	3AY-H454E-00	28 - 19	90159-06067	17 - 9
1UB-F4773-00-P1	21 - 17	1UB-F6241-00	25 - 16	1UB-F8385-10	28 - 12	1UB-H332E-00	31 - 15	1UB-H4710-00	34 - 1		28 - 10
1UB-F4773-00-P2	21 - 17	1UB-F6241-10	25 - 16	1UB-F8395-00	28 - 14	1UB-H3330-00	31 - 10	4AC-H4714-00	34 - 2	90159-06817	16 - 4
1UB-F4773-00-P3	21 - 17	1UB-F6241-20	25 - 16	1UB-F83G8-00	28 - 23	1UB-H3340-00	31 - 13	1UB-H4715-00	34 - 8	90163-05803	7 - 14
1UB-F4773-00-P4	21 - 17	1UB-F6246-00	25 - 30	1UB-F83G8-10	28 - 23	5D9-H3350-00	37 - 10	1UB-H4723-00	34 - 5	90167-04021	32 - 2

NUMERICAL INDEX

PART NO.	REF. NO.	PART NO.	REF. NO.	PART NO.	REF. NO.	PART NO.	REF. NO.	PART NO.	REF. NO.	PART NO.	REF. NO.
90170-05302	3 - 10	90249-12008	25 - 28	90506-12001	24 - 8	93210-448G4	1 - 16	95602-08200	15 - 9	98507-06020	6 - 10
90170-10317	13 - 7	90280-03017	2 - 11	90506-15001	24 - 9	93210-71462	1 - 13	9560L-10200	15 - 5		6 - 26
90175-06013	25 - 27	90338-08163	25 - 10	90506-20514	27 - 17	93211-07800	10 - 16	95702-06500	21 - 10	98507-06025	6 - 15
90176-08805	1 - 19	90340-12808	10 - 36	90506-35002	27 - 5	93300-638Y8	13 - 8		21 - 13	9850L-06008	35 - 5
90179-12248	29 - 6	90380-15809	12 - 12	90508-32768	12 - 11	93306-002X2	4 - 2	95702-10500	24 - 5	9850M-05020	35 - 6
90179-25802	19 - 30	90387-06052	6 - 25	90560-10292	22 - 2	93306-003YR	15 - 11	95707-08500	9 - 15		35 - 8
90183-05807	16 - 13	90387-067V1	6 - 6	91312-06014	36 - 8	93306-054X9	14 - 9	95707-10500	9 - 6	98702-03008	35 - 14
	17 - 7	90387-06851	17 - 11	91312-06035	25 - 34	93306-203YY	13 - 5	95802-06010	15 - 16	98907-06010	11 - 8
	21 - 7	90387-06891	7 - 23	91312-08025	25 - 9		14 - 12		19 - 33	98907-06016	28 - 2
	27 - 8	90387-068S1	16 - 2	91317-06012	4 - 13	93306-300YF	22 - 4		19 - 35	99001-08600	27 - 4
	27 - 12	90387-07811	28 - 3	91317-06016	4 - 11	93306-301XT	14 - 2		37 - 12	99009-15400	12 - 14
	28 - 16	90387-08754	15 - 7	91317-06020	1 - 14	93306-305X3	2 - 8	95802-06012	20 - 3	99009-17400	13 - 4
	28 - 21	90387-08817	28 - 5		29 - 3	93306-372Y1	2 - 9	95802-06014	16 - 3	99480-05010	10 - 18
	33 - 10	90387-10837	22 - 7	91317-06025	12 - 17	93306-809Y0	12 - 2	95802-08016	27 - 26		
	34 - 7	90387-16009	13 - 15	91317-08035	9 - 16	93310-528Y8	2 - 4		27 - 34		
90185-08009	27 - 16	90387-16811	13 - 15	91401-25015	27 - 25	93311-315Y6	14 - 3	95812-06020	21 - 18		
90185-08017	9 - 8	90401-10812	26 - 2		27 - 33	93410-20070	14 - 11	95817-06065	7 - 5		
90185-10811	22 - 9	90413-05014	9 - 31	91701-08035	27 - 24	93440-45827	12 - 3	95817-08016	4 - 5		
90185-10815	25 - 4	90430-06014	1 - 7		27 - 32	93450-16068	2 - 14		10 - 24		
	25 - 7	90430-08119	10 - 25	91810-14809	1 - 22	93501-04830	27 - 23	95817-08045	9 - 7		
90185-12008	15 - 14	90445-08834	17 - 5		1 - 23		27 - 31	95817-10035	9 - 5		
90185-14814	24 - 15	90462-08806	7 - 24		10 - 10	94107-14802	22 - 5	97002-06012	20 - 13		
90201-06060	13 - 2	90462-10802	11 - 13		10 - 30	94108-14802	24 - 2	97007-06025	30 - 7		
90201-06088	6 - 27	90464-14801	28 - 8		11 - 9	94207-14802	22 - 6	97602-06216	37 - 8		
90201-08043	9 - 12	90464-60810	7 - 25	92902-06600	20 - 14	94208-14802	24 - 3	97707-50016	17 - 2		
	9 - 17	90465-10037	37 - 5		36 - 9	94568-B3090	4 - 6		17 - 8		
90201-081R9	9 - 9	90467-08075	9 - 28	92902-08200	1 - 18	94700-00828	1 - 20		27 - 13		
90201-08609	1 - 17		20 - 11	92902-10200	23 - 16	94700-00886	1 - 20		28 - 7		
90201-08823	25 - 8	90467-08804	9 - 27	92907-05200	7 - 19	95022-06020	35 - 15		28 - 13		
90201-10018	12 - 7	90467-09006	1 - 28	92907-06200	11 - 25	95022-06025	26 - 11		28 - 15		
90201-10065	18 - 5		1 - 29	92907-06600	6 - 11	95027-06010	13 - 3		28 - 18		
90201-10118	26 - 3		20 - 10		6 - 16	95027-06012	6 - 19		28 - 20		
90201-10119	27 - 3	90467-10008	20 - 9		9 - 23		12 - 9		31 - 9		
90201-10831	22 - 10	90467-11106	10 - 8		30 - 8	95027-06016	10 - 20		31 - 16		
90201-12028	18 - 4		10 - 9	93101-21803	13 - 11	95027-06025	11 - 10		33 - 14		
90201-12688	15 - 13		11 - 5	93102-15801	12 - 15	95027-06035	11 - 11		33 - 17		
	29 - 5	90467-12807	7 - 13	93102-17812	13 - 6	95027-06040	11 - 23	97707-60430	6 - 14		
90201-14820	24 - 16	90467-13806	9 - 21	93102-19800	10 - 15	95027-06050	10 - 13	97707-60530	6 - 12		
90201-15008	14 - 4	90480-01805	16 - 14	93102-22810	10 - 21	95027-06060	10 - 11		6 - 13		
90201-15016	14 - 5		17 - 10	93102-26800	14 - 10		11 - 12	9770L-40616	34 - 6		
90201-154E8	12 - 13	90480-10332	9 - 13	93106-20816	22 - 3		11 - 24	98502-04012	8 - 22		
90201-16008	13 - 16	90480-13810	34 - 9	93210-06800	13 - 9	95027-06070	10 - 19	98502-06014	25 - 25		
90201-20276	24 - 17	90480-13M24	9 - 30	93210-07802	24 - 6	95027-06100	1 - 24	98502-06040	25 - 24		
90206-14093	24 - 13	90480-14817	6 - 24	93210-09800	1 - 4		10 - 12	98507-05016	25 - 20		
90208-12050	13 - 21	90501-12743	27 - 22	93210-148H8	10 - 27	95302-10600	18 - 3	98507-05020	5 - 3		
90208-21002	14 - 8		27 - 30	93210-15862	4 - 14	95307-12700	13 - 22	98507-06014	9 - 22		
90214-14002	13 - 19	90501-16003	25 - 26	93210-25803	7 - 4	95602-06100	35 - 12	98507-06016	29 - 4		
90249-10002	27 - 2	90501-16004	5 - 6	93210-29800	5 - 7		35 - 18		37 - 4		